



S20x2 Deckel

Collet Chuck ER / SK40



Verlinkung Zubehör

0208, 02011, 02016, 02020, 02025, 02032,
02040, 02050, G023, 024, 024IK, 024G,
024HU,

Verwendung

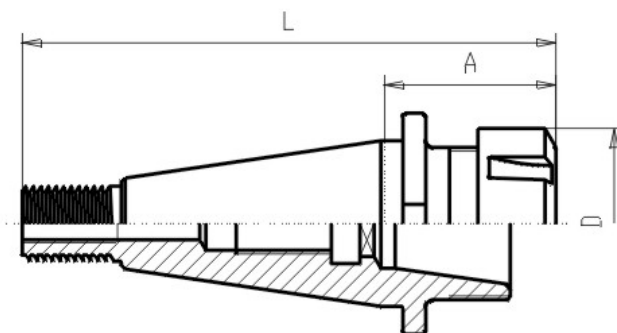
For clamping of toolings with zylindrical shafts

Lieferumfang

with clamping-nut DIN 6499.

Werkstoff

Alloyed case-hardened steel with a tensile strength of 800N/mm². Carbonized according to Vickers min. 630 HV (min. 56 HRC), Thread, outside-shank and inside-shank for collets grinded. Runout accuracy of outside-shank to inside-shank lmax. 0,005mm

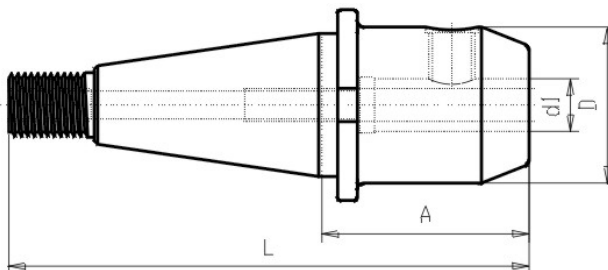


Article-Nr.	SK	A	Form	L	D	Typ ER	Spannber. ER
G210 40x25x 45	40	45	AD	139	42	25	2-16
G210 40x32x 45	40	46	AD	140	50	32	3-20
G210 40x40x 66	40	68	AD	162	63	40	4-26



S20x2 Deckel

End Mill Holder WELDON / SK40



Verlinkung Zubehör

01032B, 01020,

Verwendung

For milling-tools with cylindrical shaft type Weldon DIN 1835 Form B. Suitable for central coolant flow

Lieferumfang

with 1 clamping screw, from Dia 25mm with 2 screws

Werkstoff

Alloyed case-hardened steel with a tensile strength of min. 800 N/mm². Carbonized according to Vickers min. 630 HV (min. 56 HRC) Shank and cylindrical surface are grinded.

Article-Nr.	SK	d1	A	Form	L	D
G220 40x 6x 50	40	6	50	AD	145	25
G220 40x 8x 50	40	8	50	AD	145	28
G220 40x10x 50	40	10	50	AD	145	35
G220 40x12x 50	40	12	50	AD	145	42
G220 40x16x 63	40	16	63	AD	158	48
G220 40x20x 63	40	20	63	AD	158	52
G220 40x25x 80	40	25	80	AD	175	63
G220 40x32x 80	40	32	80	AD	175	70



S20x2 Deckel

Taper shafts / SK40

**Verwendung**

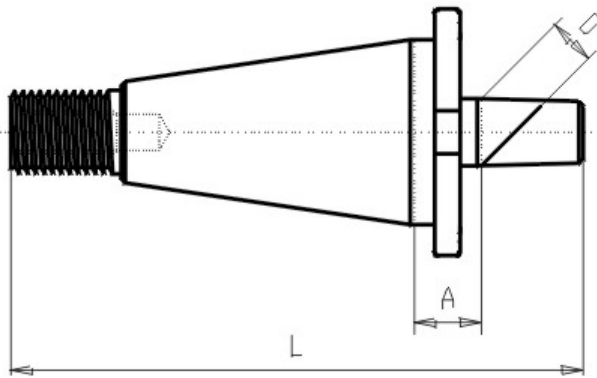
For mounting drill chuck heads

Lieferumfang

Without drill chuck head

Werkstoff

Alloyed case-hardened steel with a tensile strength of min. 800 N/mm². Carbonized according to Vickers min. 630 HV (min. 56 HRC) Shank and cone are grinded.

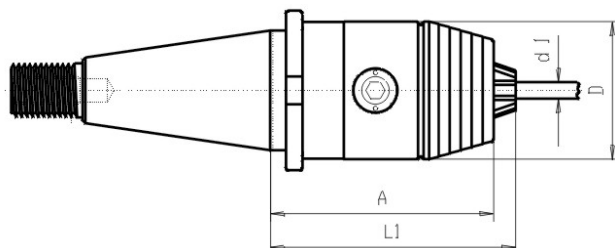


Article-Nr.	SK	A	Form	L	D
G230 40x16x 15	40	16	A	135	16



S20x2 Deckel

High Precis. Drill Chuck / SK40



Verwendung

For clamping of toolings with cylindrical shafts
Permissible rotating speed: Clamping range 0,5 - 8 mm max. 25.000 U/min Clamping range 1 - 13 mm max. 20.000 U/min Clamping range 3 - 16 mm max. 15.000 U/min To fit these rotating speed

Lieferumfang

with spanner

Werkstoff

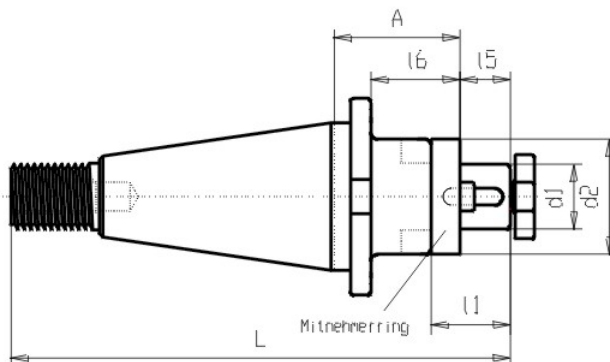
Alloyed case-hardened steel with a tensile strength of min. 800 N/mm². Shank, jacket, clamping jaw and other relevant pieces are hardened and grinded. A manual is attached to every Drill Chuck

Article-Nr.	SK	d1	A	Form	l1	D
G234 40x08	40	0,5-8	72	A	75	36
G234 40x13	40	1,0-13	84	A	90	50
G234 40x16	40	3,0-16	84	A	95	57



S20x2 Deckel

Combi Shell Mill Holder / SK40



Verlinkung Zubehör

G040, G041,

Verwendung

For mounting of milling cutters with tenon drive or clutch drive

Lieferumfang

With clamping screw DIN 6367, drive ring DIN 6366 and feather key.

Werkstoff

Alloyed case-hardened steel with a tensile strength of 800N/mm². Carbonized according to Vickers min. 630 HV (min. 56 HRC), Shank, journal and contact surface are grinded.

Article-Nr.	SK	d1	A	Form	l1	l5	l6	d2	L
G240 40x13x 37	40	13	37	A	22	12	25	28	143
G240 40x16x 37	40	16	37	A	27	17	25	32	148
G240 40x22x 37	40	22	37	A	31	19	25	40	150
G240 40x27x 52	40	27	52	A	33	21	40	48	152
G240 40x32x 52	40	32	52	A	38	24	40	58	155
G240 40x40x 52	40	40	52	A	41	27	40	70	158



S20x2 Deckel

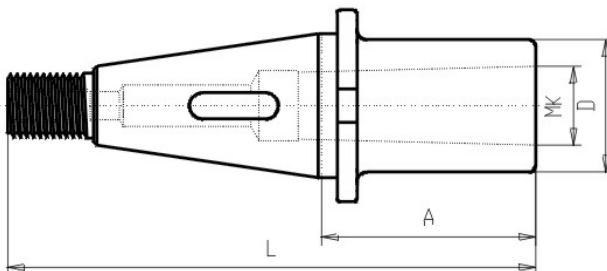
Morse Taper Adaptor / SK40

Verwendung

For toolings with morse taper and flat tang

Werkstoff

Alloyed case-hardened steel with a tensile strength of 800N/mm². Carbonized according to Vickers min. 630 HV (min. 56 HRC), Outside shank and inside morse taper are grinded.



Article-Nr.	SK	MK	A	Form	L	D
G260 40x1x 50	40	1	50	AD	144	25
G260 40x2x 50	40	2	50	AD	144	32
G260 40x3x 65	40	3	65	AD	160	40
G260 40x4x 95	40	4	95	AD	189	48



S20x2 Deckel

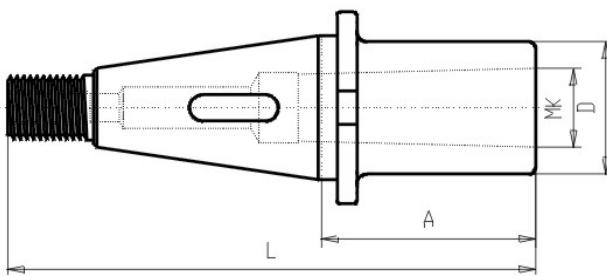
Combi Morse Taper Adaptor / SK40

Verwendung

For toolings with morse taper and flat tang or thread

Werkstoff

Alloyed case-hardened steel with a tensile strength of 800N/mm². Carnonized according to Vickers min. 630 HV (min. 56 HRC), Outside shank and inside morse taper are grinded.



Article-Nr.	SK	MK	A	Form	L	D
G263 40x1x 50	40	1	50	A	144	25
G263 40x2x 50	40	2	50	A	144	32
G263 40x3x 65	40	3	65	A	160	40
G263 40x4x 95	40	4	95	A	189	48

