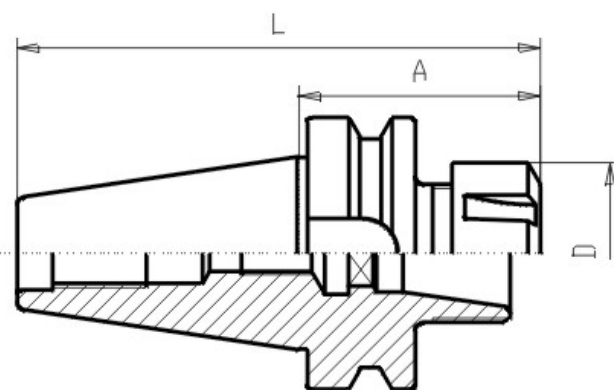




MAS-BT

Collet Chuck ER / BT30



Verlinkung Zubehör

0208, 02011, 02016, 02020, 02025, 02032,
02040, 02050, G023, 024, 024IK, 024G,
024HU, 024mini,

Verwendung

For clamping of toolings with cylindrical shafts.
Suitable for central internal coolant flow Form
AD.

Lieferumfang

with clamping-nut DIN 6499.

Werkstoff

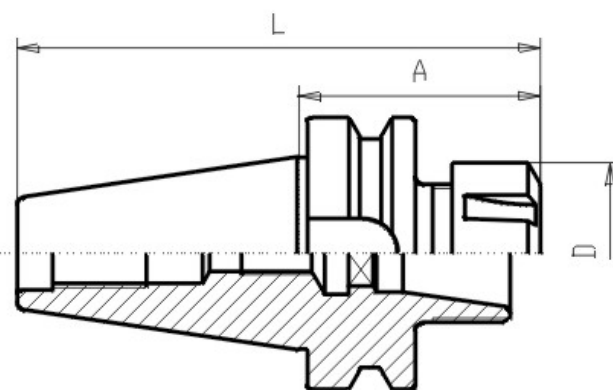
Alloyed case-hardened steel with a tensile
strength of 800N/mm². Carbonized according to
Vickers min. 630 HV (min. 56 HRC), Thread,
outside-shank and inside-shank for collets
grinded. Runout accuracy of outside-shank to
inside-shank lmax. 0,005mm

Article-Nr.	BT	A	Form	L	D	Typ ER	Spannber. ER
G410 30x16x 70	30	70	AD	118	28	16	1-10
G410 30x16x100	30	100	AD	148	28	16	1-10
G410 30x25x 70	30	70	AD	118	42	25	2-16
G410 30x32x 70	30	70	AD	118	50	32	3-20



MAS-BT

Collet Chuck ER / BT35



Verlinkung Zubehör

0208, 02011, 02016, 02020, 02025, 02032,
02040, 02050, G023, 024, 024IK, 024G,
024HU, 024mini,

Verwendung

For clamping of toolings with cylindrical shafts.
Suitable for central internal coolant flow Form
AD.

Lieferumfang

with clamping-nut DIN 6499.

Werkstoff

Alloyed case-hardened steel with a tensile
strength of 800N/mm². Carbonized according to
Vickers min. 630 HV (min. 56 HRC), Thread,
outside-shank and inside-shank for collets
grinded. Runout accuracy of outside-shank to
inside-shank lmax. 0,005mm

Besonderheit

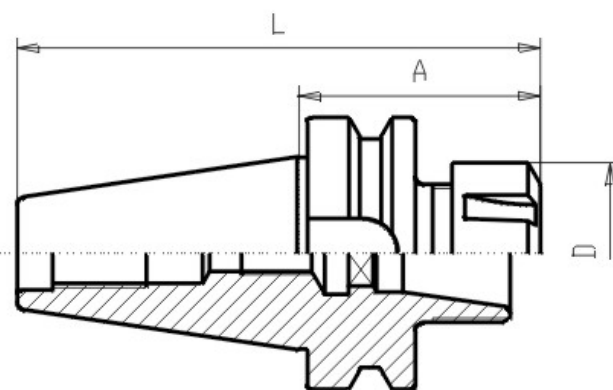
Only sales of rest-stock - no new production

Article-Nr.	BT	A	Form	L	D	Typ ER	Spannber. ER
G410 35x16x140	35	140	AD	197	28	16	1-10
G410 35x25x144	35	144	AD	203	42	25	2-16
G410 35x32x144	35	144	AD	203	50	32	3-20



MAS-BT

Collet Chuck ER / BT40



Verlinkung Zubehör

0208, 02011, 02016, 02020, 02025, 02032,
02040, 02050, G023, 024, 024IK, 024G,
024HU, 024mini,

Verwendung

For clamping of toolings with cylindrical shafts.
Suitable for central internal coolant flow Form
AD.

Lieferumfang

with clamping-nut DIN 6499.

Werkstoff

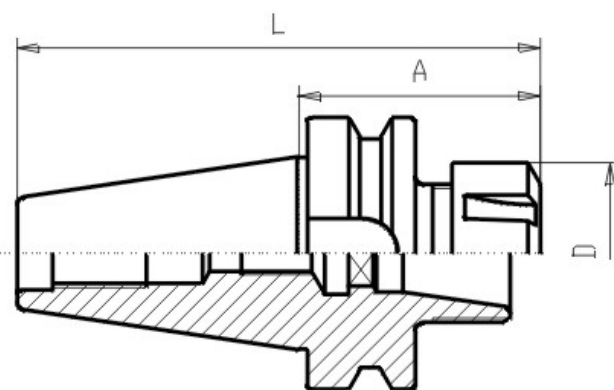
Alloyed case-hardened steel with a tensile
strength of 800N/mm². Carbonized according to
Vickers min. 630 HV (min. 56 HRC), Thread,
outside-shank and inside-shank for collets
grinded. Runout accuracy of outside-shank to
inside-shank lmax. 0,005mm

Article-Nr.	BT	A	Form	L	D	Typ ER	Spannber. ER
G410 40x16x 60	40	60	AD	126	28	16	1-10
G410 40x16x100	40	100	AD	166	28	16	1-10
G410 40x16x160	40	160	AD	226	28	16	1-10
G410 40x25x 60	40	60	AD	126	42	25	2-16
G410 40x25x100	40	100	AD	166	42	25	2-16
G410 40x25x160	40	160	AD	226	42	25	2-16
G410 40x32x 60	40	60	AD	126	50	32	3-20
G410 40x32x100	40	100	AD	166	50	32	3-20
G410 40x32x160	40	160	AD	226	50	32	3-20
G410 40x40x 80	40	80	AD	146	63	40	4-26
G410 40x40x120	40	120	AD	186	63	40	4-26
G410 40x40x160	40	160	AD	226	63	40	4-26
G410 40x50x122	40	122	AD	187	78	50	6-34



MAS-BT

Collet Chuck ER / BT40 Form ADB



Verlinkung Zubehör

0208, 02011, 02016, 02020, 02025, 02032,
02040, 02050, G023, 024, 024IK, 024G,
024HU, 024mini,

Verwendung

For clamping of toolings with cylindrical shafts.
Suitable for internal coolant flow Form B, this
means over the collar.

Lieferumfang

with clamping-nut DIN 6499.

Werkstoff

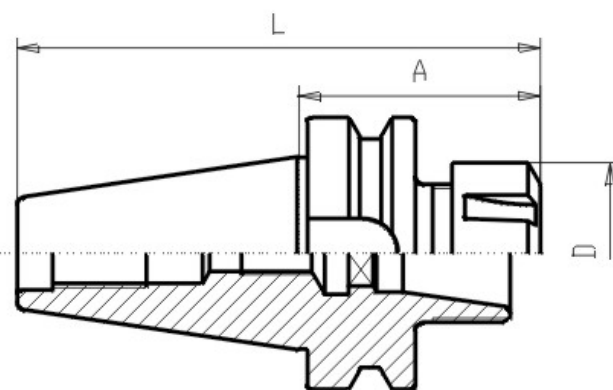
Alloyed case-hardened steel with a tensile
strength of 800N/mm². Carbonized according to
Vickers min. 630 HV (min. 56 HRC), Thread,
outside-shank and inside-shank for collets
grinded. Runout accuracy of outside-shank to
inside-shank lmax. 0,005mm

Article-Nr.	BT	A	Form	L	D	Typ ER	Spannber. ER
G410D40x32x 60	40	60	B	126	50	32	3-20
G410D40x40x 65	40	65	B	131	63	40	4-26



MAS-BT

Collet Chuck ER / BT50



Verlinkung Zubehör

0208, 02011, 02016, 02020, 02025, 02032,
02040, 02050, G023, 024, 024IK, 024G,
024HU, 024mini,

Verwendung

For clamping of toolings with cylindrical shafts.
Suitable for central internal coolant flow Form
AD.

Lieferumfang

with clamping-nut DIN 6499.

Werkstoff

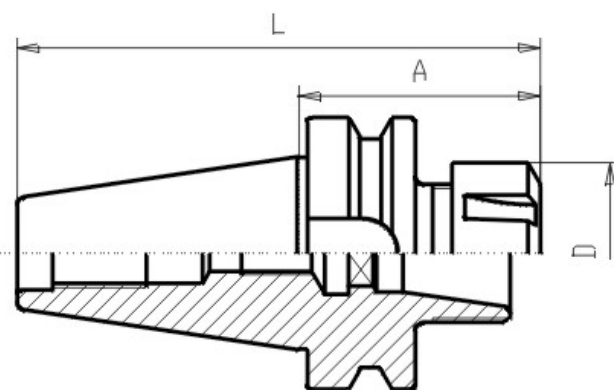
Alloyed case-hardened steel with a tensile
strength of 800N/mm². Carbonized according to
Vickers min. 630 HV (min. 56 HRC), Thread,
outside-shank and inside-shank for collets
grinded. Runout accuracy of outside-shank to
inside-shank lmax. 0,005mm

Article-Nr.	BT	A	Form	L	D	Typ ER	Spannber. ER
G410 50x32x 70	50	70	AD	172	50	32	3-20
G410 50x32x100	50	100	AD	202	50	32	3-20
G410 50x32x160	50	160	AD	262	50	32	3-20
G410 50x40x 80	50	80	AD	182	63	40	4-26
G410 50x40x160	50	160	AD	262	63	40	4-26



MAS-BT

Collet Chuck ER / BT50 Form ADB



Verlinkung Zubehör

0208, 02011, 02016, 02020, 02025, 02032,
02040, 02050, G023, 024, 024IK, 024G,
024HU, 024mini,

Verwendung

For clamping of toolings with cylindrical shafts.
Suitable for internal coolant flow Form B, this
means over the collar.

Lieferumfang

with clamping-nut DIN 6499.

Werkstoff

Alloyed case-hardened steel with a tensile
strength of 800N/mm². Carbonized according to
Vickers min. 630 HV (min. 56 HRC), Thread,
outside-shank and inside-shank for collets
grinded. Runout accuracy of outside-shank to
inside-shank lmax. 0,005mm

Article-Nr.	BT	A	Form	L	D	Typ ER	Spannber. ER
G410D50x32x 74	50	74	B	172	50	32	3-20
G410D50x40x 82	50	82	B	182	63	40	4-26
G410D50x50x 87	50	87	B	188	78	50	6-34



MAS-BT

Hydraulic Chuck / BT40 G6,3/15.000 rpm



Verlinkung Zubehör

01420, 01432,

Verwendung

For clamping of toolings with cylindrical shaft

Lieferumfang

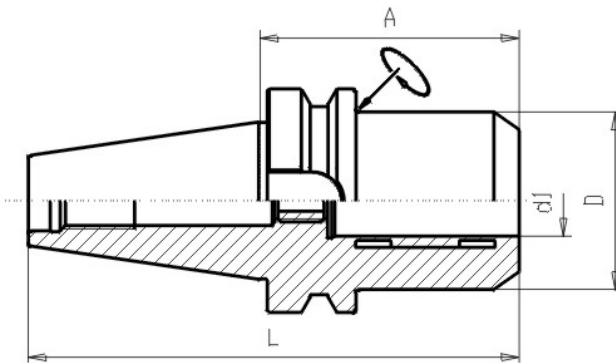
including wrench

Werkstoff

Alloyed case-hardened steel with a tensile strength of 800N/mm

Ausführung

Max runout of 3µm. Balanced at G6,3 15.000 rpm.



Article-Nr.	BT	d1	A	Form	I2	D
G414 40x16	40	16	80	AD/B	49	38
G414 40x20	40	20	80	AD/B	51	42



MAS-BT

Hydraulic Chuck / BT50 G6,3/15.000 rpm



Verlinkung Zubehör

01420, 01432,

Verwendung

For clamping of toolings with cylindrical shaft

Lieferumfang

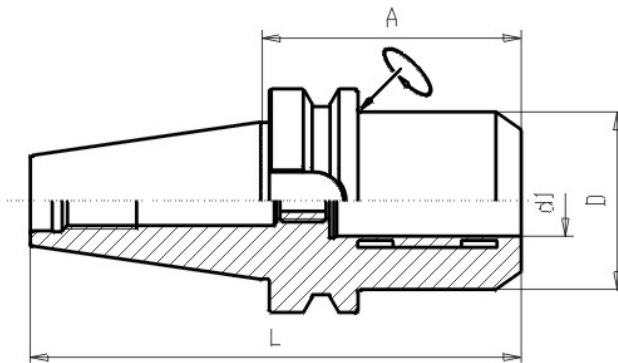
including wrench

Werkstoff

Alloyed case-hardened steel with a tensile strength of 800N/mm

Ausführung

Max runout of 3µm. Balanced at G6,3 15.000 rpm.

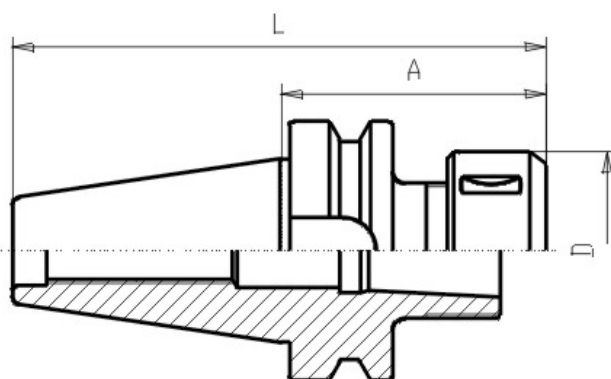


Article-Nr.	BT	d1	A	Form	I2	D
G414 50x20	50	20	80	AD/B	51	42
G414 50x32	50	32	100	AD/B	61	63



MAS-BT

Collet Chuck OZ Ortlieb / BT30



Verlinkung Zubehör

01616, 01625, 01632, G017, 018, 018IK, 018gw,

Verwendung

For clamping of toolings with cylindrical shafts. Suitable for internal coolant flow Form AD, this means central

Lieferumfang

with clamping-nut DIN 6499.

Werkstoff

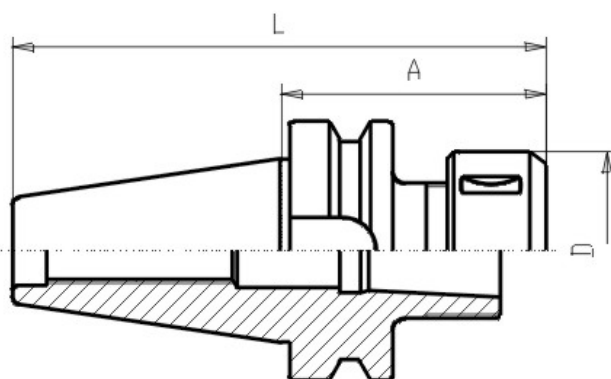
Alloyed case-hardened steel with a tensile strength of 800N/mm². Carbonized according to Vickers min. 630 HV (min. 56 HRC), Thread, outside-shank and inside-shank for collets grinded. Runout accuracy of outside-shank to inside-shank lmax. 0,005mm

Article-Nr.	BT	A	Form	L	D	Typ OZ	Spannber. OZ
G416 30x16x 60	30	60	AD	108	43	16	1-16
G416 30x25x 80	30	80	AD	128	60	25	2-25



MAS-BT

Collet Chuck OZ Ortlieb / BT40



Verlinkung Zubehör

01616, 01625, 01632, G017, 018, 018IK, 018gw,

Verwendung

For clamping of toolings with cylindrical shafts. Suitable for internal coolant flow Form AD, this means central

Lieferumfang

with clamping-nut DIN 6499.

Werkstoff

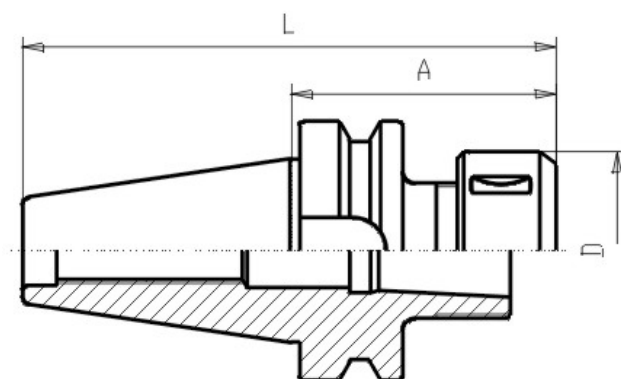
Alloyed case-hardened steel with a tensile strength of 800N/mm². Carbonized according to Vickers min. 630 HV (min. 56 HRC), Thread, outside-shank and inside-shank for collets grinded. Runout accuracy of outside-shank to inside-shank lmax. 0,005mm

Article-Nr.	BT	A	Form	L	D	Typ OZ	Spannber. OZ
G416 40x16x 70	40	70	AD	136	43	16	1-16
G416 40x16x100	40	100	AD	166	43	16	1-16
G416 40x25x 70	40	70	AD	136	60	25	2-25
G416 40x25x100	40	100	AD	166	60	25	2-25
G416 40x25x120	40	120	AD	186	60	25	2-25
G416 40x25x160	40	160	AD	226	60	25	2-25
G416 40x32x 90	40	90	AD	156	72	32	3-32



MAS-BT

Collet Chuck OZ Ortlieb / BT40 Form ADB



Verlinkung Zubehör

01616, 01625, 01632, G017, 018, 018IK, 018gw,

Verwendung

For clamping of toolings with cylindrical shafts. Suitable for internal coolant flow Form B, this means over the collar.

Lieferumfang

with clamping-nut DIN 6499.

Werkstoff

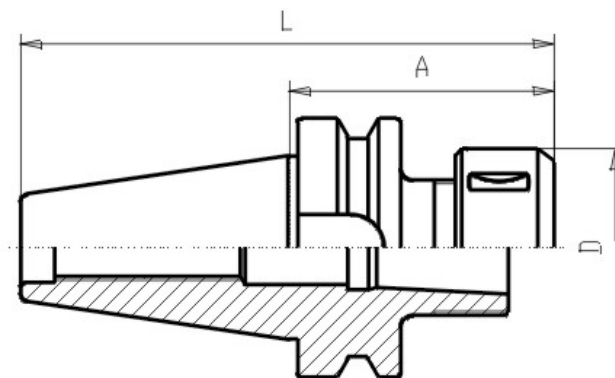
Alloyed case-hardened steel with a tensile strength of 800N/mm². Carbonized according to Vickers min. 630 HV (min. 56 HRC), Thread, outside-shank and inside-shank for collets grinded. Runout accuracy of outside-shank to inside-shank lmax. 0,005mm

Article-Nr.	BT	A	Form	L	D	Typ OZ	Spannber. OZ
G416D40x25x 70	40	70	B	136	60	25	2-25



MAS-BT

Collet Chuck OZ Ortlieb / BT50



Verlinkung Zubehör

01616, 01625, 01632, G017, 018, 018IK, 018gw,

Verwendung

For clamping of toolings with cylindrical shafts. Suitable for internal coolant flow Form AD, this means central

Lieferumfang

with clamping-nut DIN 6499.

Werkstoff

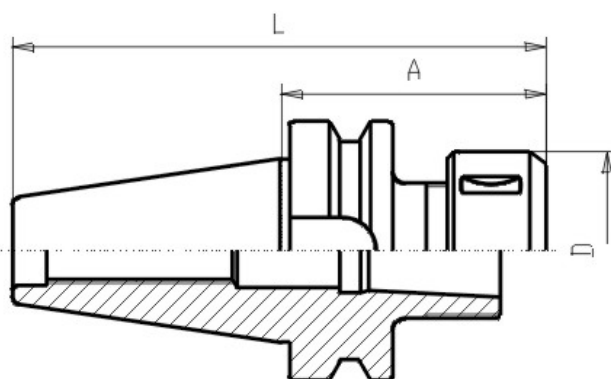
Alloyed case-hardened steel with a tensile strength of 800N/mm². Carbonized according to Vickers min. 630 HV (min. 56 HRC), Thread, outside-shank and inside-shank for collets grinded. Runout accuracy of outside-shank to inside-shank lmax. 0,005mm

Article-Nr.	BT	A	Form	L	D	Typ OZ	Spannber. OZ
G416 50x25x 85	50	85	AD	194	60	25	2-25
G416 50x32x 90	50	90	AD	192	72	32	3-32



MAS-BT

Collet Chuck OZ Ortlieb / BT50 Form ADB



Verlinkung Zubehör

01616, 01625, 01632, G017, 018, 018IK, 018gw,

Verwendung

For clamping of toolings with cylindrical shafts. Suitable for internal coolant flow Form B, this means over the collar.

Lieferumfang

with clamping-nut DIN 6499.

Werkstoff

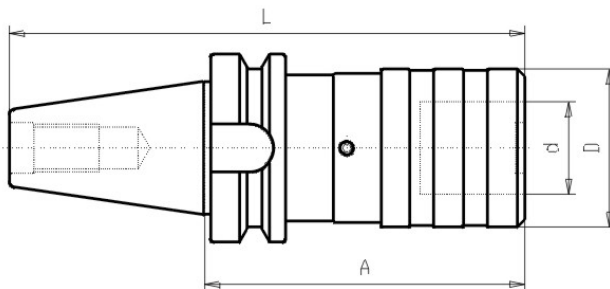
Alloyed case-hardened steel with a tensile strength of 800N/mm². Carbonized according to Vickers min. 630 HV (min. 56 HRC), Thread, outside-shank and inside-shank for collets grinded. Runout accuracy of outside-shank to inside-shank lmax. 0,005mm

Article-Nr.	BT	A	Form	L	D	Typ OZ	Spannber. OZ
G416D50x25x 70	50	70	B	169	60	25	2-25
G416D50x32x 80	50	80	B	192	72	32	3-32



MAS-BT

Tapping Chuck / BT30 with compensation



Verlinkung Zubehör

013 1mit, 013 1ohne, 013 2mit, 013 2ohne, 013 3mit, 013 3ohne,

Verwendung

For fixing bushes for tapping chucks see Group 013. The torque of chamfer start can be adjusted mechanical with an hexagon socket screw. With compensation on press and pull

Werkstoff

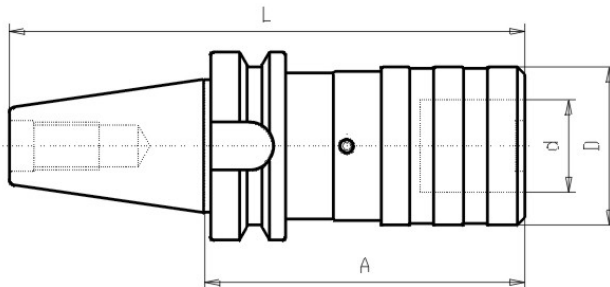
Alloyed case-hardened steel with a tensile strength of 800N/mm². Carbonized according to Vickers min. 630 HV (min. 56 HRC), Shank surface is grinded.

Article-Nr.	BT	A	Form	L	d.	D	Größe	Gewinde
G417 30x 1x 61	30	61	A	109	19	38	1	M3-M12
G417 30x 2x 95	30	95	A	143	31	53	2	M8-M20



MAS-BT

Tapping Chuck / BT40 with compensation



Verlinkung Zubehör

013 1mit, 013 1ohne, 013 2mit, 013 2ohne, 013 3mit, 013 3ohne,

Verwendung

For fixing bushes for tapping chucks see Group 013. The torque of chamfer start can be adjusted mechanical with an hexagon socket screw. With compensation on press and pull

Werkstoff

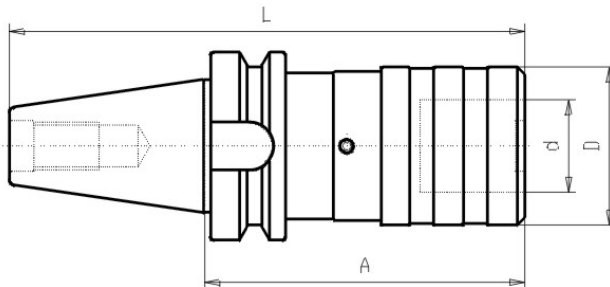
Alloyed case-hardened steel with a tensile strength of 800N/mm². Carbonized according to Vickers min. 630 HV (min. 56 HRC), Shank surface is grinded.

Article-Nr.	BT	A	Form	L	d.	D	Größe	Gewinde
G417 40x 1x 67	40	67	A	133	19	38	1	M3-M12
G417 40x 2x 93	40	93	A	159	31	53	2	M8-M20
G417 40x 3x 138	40	138	A	204	48	78	3	M14-M33



MAS-BT

Tapping Chuck / BT50 with compensation



Verlinkung Zubehör

013 1mit, 013 1ohne, 013 2mit, 013 2ohne, 013 3mit, 013 3ohne,

Verwendung

For fixing bushes for tapping chucks see Group 013. The torque of chamfer start can be adjusted mechanical with an hexagon socket screw. With compensation on press and pull

Werkstoff

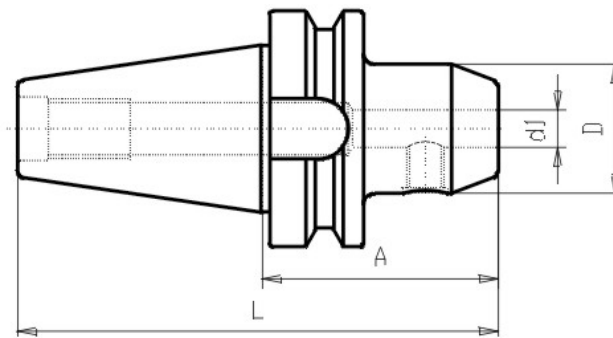
Alloyed case-hardened steel with a tensile strength of 800N/mm². Carbonized according to Vickers min. 630 HV (min. 56 HRC), Shank surface is grinded.

Article-Nr.	BT	A	Form	L	d.	D	Größe	Gewinde
G417 50x 1x 80	50	100	A	202	19	38	1	M3-M12
G417 50x 2x102	50	102	A	204	31	53	2	M8-M20
G417 50x 3x138	50	144	A	246	48	78	3	M14-M33



MAS-BT

End Mill Holder WELDON / BT30



Verlinkung Zubehör

01032B, 01020, 01032,

Verwendung

For milling-tools with zylindrical shaft type Weldon DIN 1835 Form B. Suitable for central coolant flow

Lieferumfang

with 1 clamping screw, from Dia 25mm with 2 screws

Werkstoff

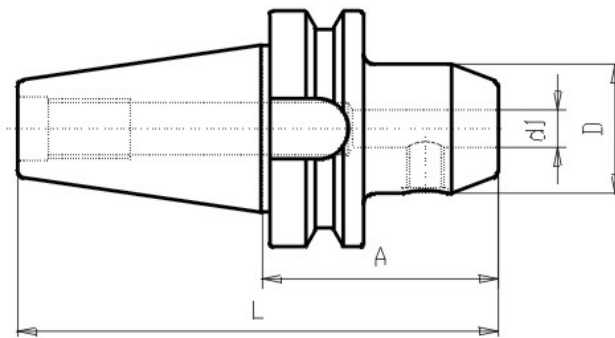
Alloyed case-hardened steel with a tensile strength of min. 800 N/mm². Carbonized according to Vickers min. 630 HV (min. 56 HRC) Shank and zylindrical surface are grinded.

Article-Nr.	BT	d1	A	Form	L	D
G420 30x 6x 50	30	6	50	AD	98	25
G420 30x 8x 50	30	8	50	AD	98	28
G420 30x10x 50	30	10	50	AD	98	35
G420 30x12x 55	30	12	55	AD	103	42
G420 30x14x 50	30	14	50	AD	98	42
G420 30x16x 63	30	16	63	AD	111	48
G420 30x16x100	30	16	100	AD	148	48
G420 30x20x 63	30	20	63	AD	111	52
G420 30x20x100	30	20	100	AD	148	52



MAS-BT

End Mill Holder WELDON / BT35



Verlinkung Zubehör

01032B, 01020, 01032,

Verwendung

For milling-tools with zylindrical shaft type Weldon DIN 1835 Form B. Suitable for central coolant flow

Lieferumfang

with 1 clamping screw, from Dia 25mm with 2 screws

Werkstoff

Alloyed case-hardened steel with a tensile strength of min. 800 N/mm². Carbonized according to Vickers min. 630 HV (min. 56 HRC) Shank and zylindrical surface are grinded.

Besonderheit

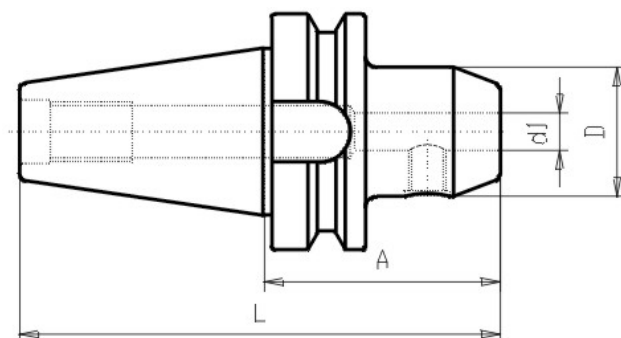
Only sales of rest-stock - no new production

Article-Nr.	BT	d1	A	Form	L	D
G420 35x 8x 50	35	8	50	AD	107	28
G420 35x10x 50	35	10	50	AD	107	35
G420 35x12x 50	35	12	50	AD	107	42
G420 35x14x50	35	14	50	AD	107	42
G420 35x16x 63	35	16	63	AD	120	48
G420 35x25x 90	35	25	90	AD	147	65



MAS-BT

End Mill Holder WELDON / BT40



Verlinkung Zubehör

01032B, 01020, 01032,

Verwendung

For milling-tools with zylindrical shaft type Weldon DIN 1835 Form B. Suitable for central coolant flow

Lieferumfang

with 1 clamping screw, from Dia 25mm with 2 screws

Werkstoff

Alloyed case-hardened steel with a tensile strength of min. 800 N/mm². Carbonized according to Vickers min. 630 HV (min. 56 HRC) Shank and zylindrical surface are grinded.

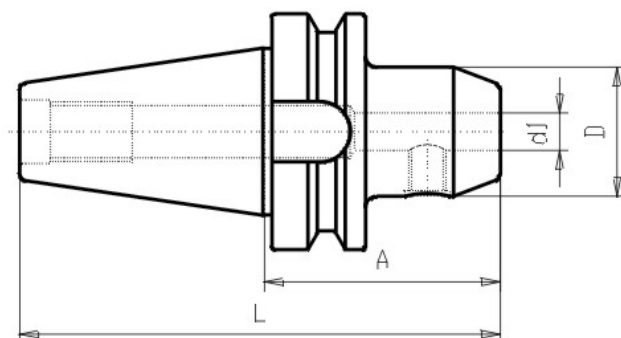
Article-Nr.	BT	d1	A	Form	L	D
G420 40x 6x 50	40	6	50	AD	116	25
G420 40x 6x100	40	6	100	AD	166	25
G420 40x 6x160	40	6	160	AD	226	25
G420 40x 8x 50	40	8	50	AD	116	28
G420 40x 8x100	40	8	100	AD	166	28
G420 40x 8x160	40	8	160	AD	226	28
G420 40x10x 63	40	10	63	AD	129	35
G420 40x10x100	40	10	100	AD	166	35
G420 40x10x160	40	10	160	AD	226	35
G420 40x12x 63	40	12	63	AD	129	42
G420 40x12x100	40	12	100	AD	166	42
G420 40x12x160	40	12	160	AD	226	42
G420 40x14x 63	40	14	63	AD	129	42
G420 40x14x100	40	14	100	AD	166	42
G420 40x14x160	40	14	160	AD	226	42
G420 40x16x 63	40	16	63	AD	129	48
G420 40x16x100	40	16	100	AD	166	48
G420 40x16x160	40	16	160	AD	226	48
G420 40x18x 63	40	18	63	AD	129	48
G420 40x18x100	40	18	100	AD	166	48
G420 40x20x 63	40	20	63	AD	129	52

Article-Nr.	BT	d1	A	Form	L	D
G420 40x20x100	40	20	100	AD	166	52
G420 40x20x160	40	20	160	AD	226	52
G420 40x25x100	40	25	100	AD	166	65
G420 40x25x160	40	25	160	AD	226	65
G420 40x32x100	40	32	100	AD	166	72
G420 40x32x160	40	32	160	AD	226	72
G420 40x40x110	40	40	110	AD	176	90



MAS-BT

End Mill Holder WELDON / BT40 Form ADB



Verlinkung Zubehör

01032B, 01020, 01032,

Verwendung

For milling-tools with cylindrical shaft type Weldon DIN 1835 Form B. Suitable for internal coolant flow Form B = over collar

Lieferumfang

with 1 clamping screw, from Dia 25mm with 2 screws

Werkstoff

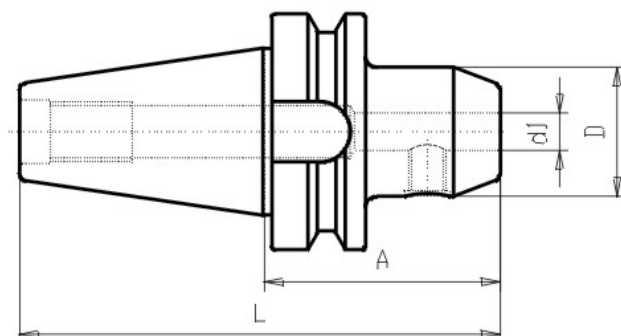
Alloyed case-hardened steel with a tensile strength of min. 800 N/mm². Carbonized according to Vickers min. 630 HV (min. 56 HRC) Shank and cylindrical surface are grinded.

Article-Nr.	BT	d1	A	Form	L	D
G420D40x 6x 50	40	6	50	B	116	25
G420D40x 8x 50	40	8	50	B	116	28
G420D40x10x 63	40	10	63	B	129	35
G420D40x12x 63	40	12	63	B	129	42
G420D40x14x 63	40	14	63	B	129	42
G420D40x16x 63	40	16	63	B	129	48
G420D40x18x 63	40	18	63	B	129	48
G420D40x20x 63	40	20	63	B	129	52
G420D40x22x 63	40	22	63	B	129	52
G420D40x25x100	40	25	100	B	166	65
G420D40x32x100	40	32	100	B	176	72
G420D40x40x100	50	40	100	B	176	90



MAS-BT

End Mill Holder WELDON / BT50



Verlinkung Zubehör

01032B, 01020, 01032,

Verwendung

For milling-tools with zylindrical shaft type Weldon DIN 1835 Form B. Suitable for central coolant flow

Lieferumfang

with 1 clamping screw, from Dia 25mm with 2 screws

Werkstoff

Alloyed case-hardened steel with a tensile strength of min. 800 N/mm². Carbonized according to Vickers min. 630 HV (min. 56 HRC) Shank and zylindrical surface are grinded.

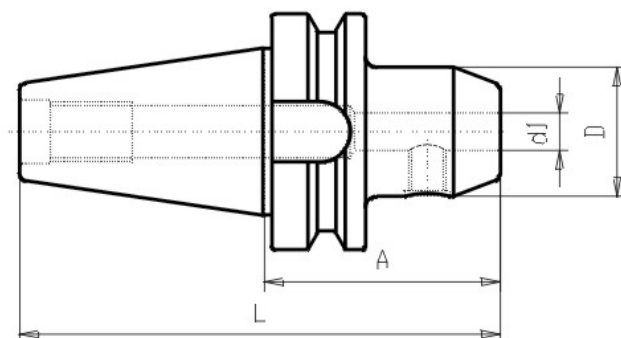
Article-Nr.	BT	d1	A	Form	L	D
G420 50x 6x 63	50	6	63	AD	165	25
G420 50x 6x160	50	6	160	AD	262	25
G420 50x 8x 63	50	8	63	AD	165	28
G420 50x 8x160	50	8	160	AD	262	28
G420 50x10x 63	50	10	63	AD	165	35
G420 50x10x100	50	10	100	AD	198	35
G420 50x10x160	50	10	160	AD	262	35
G420 50x12x 80	50	12	80	AD	182	42
G420 50x12x160	50	12	160	AD	262	42
G420 50x14x 80	50	14	80	AD	182	42
G420 50x14x160	50	14	160	AD	262	42
G420 50x16x 80	50	16	80	AD	182	48
G420 50x16x160	50	16	160	AD	262	48
G420 50x18x 80	50	18	80	AD	182	48
G420 50x20x 80	50	20	80	AD	182	52
G420 50x20x160	50	20	160	AD	262	52
G420 50x22x 80	50	22	80	AD	182	52
G420 50x25x100	50	25	100	AD	202	63
G420 50x25x160	50	25	160	AD	262	65
G420 50x32x105	50	32	105	AD	207	70
G420 50x32x160	50	32	160	AD	262	72

Article-Nr.	BT	d1	A	Form	L	D
G420 50x40x120	50	40	120	AD	222	80



MAS-BT

End Mill Holder WELDON / BT50 Form ADB



Verlinkung Zubehör

01032B, 01020, 01032,

Verwendung

For milling-tools with zylindrical shaft type Weldon DIN 1835 Form B. Suitable for internal coolant flow Form B = over collar

Lieferumfang

with 1 clamping screw, from Dia 25mm with 2 screws

Werkstoff

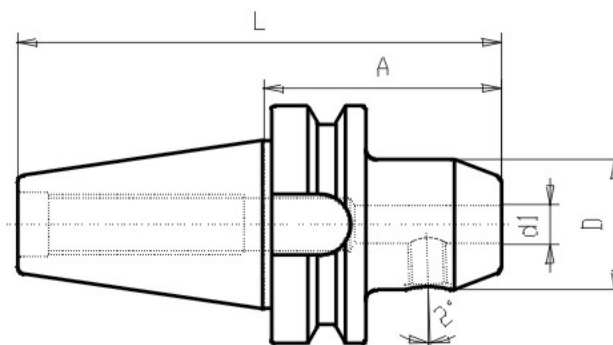
Alloyed case-hardened steel with a tensile strength of min. 800 N/mm². Carbonized according to Vickers min. 630 HV (min. 56 HRC) Shank and zylindrical surface are grinded.

Article-Nr.	BT	d1	A	Form	L	D
G420D50x 6x 63	50	6	63	B	165	25
G420D50x 8x 63	50	8	63	B	165	28
G420D50x10x 63	50	10	63	B	165	35
G420D50x12x 80	50	12	80	B	182	42
G420D50x14x 80	50	14	80	B	182	42
G420D50x16x 80	50	16	80	B	182	48
G420D50x20x 80	50	20	80	B	182	52
G420D50x22x 80	50	22	80	B	182	52
G420D50x25x100	50	25	100	B	207	65
G420D50x32x100	50	32	100	B	207	72



MAS-BT

End Mill Holder Whistle-Notch / BT40



Verlinkung Zubehör

Verwendung

For milling-tools with zylindrical shaft type
Whistle Notch DIN 1835E / 6359HE

Lieferumfang

with 1 clamping screw and 1 set screw

Werkstoff

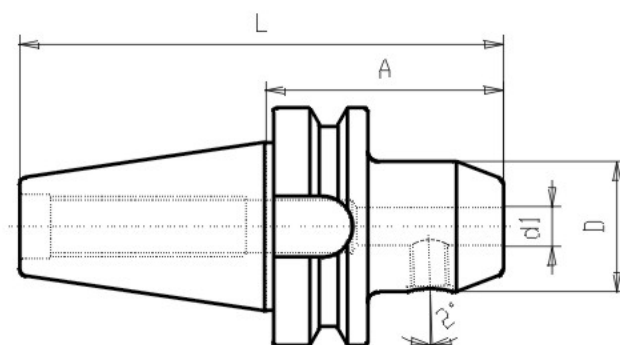
Alloyed case-hardened steel with a tensile strength of min. 800 N/mm². Carbonized according to Vickers min. 630 HV (min. 56 HRC) Shank and zylindrical surface are grinded.

Article-Nr.	BT	d1	A	Form	L	D
G421 40x 6x 50	40	6	50	A	116	25
G421 40x 8x 50	40	8	50	A	116	28
G421 40x10x 63	40	10	63	A	129	35
G421 40x12x 63	40	12	63	A	129	42
G421 40x14x 63	40	14	63	A	129	42
G421 40x16x 63	40	16	63	A	129	48
G421 40x18x 63v	40	18	63	A	129	48
G421 40x20x 63	40	20	63	A	129	52
G421 40x25x100	40	25	100	A	166	65
G421 40x32x100	40	32	100	A	166	72



MAS-BT

End Mill Holder Whistle-Notch / BT50



Verlinkung Zubehör

Verwendung

For milling-tools with zylindrical shaft type
Whistle Notch DIN 1835E / 6359HE

Lieferumfang

with 1 clamping screw and 1 set screw

Werkstoff

Alloyed case-hardened steel with a tensile strength of min. 800 N/mm². Carbonized according to Vickers min. 630 HV (min. 56 HRC) Shank and zylindrical surface are grinded.

Article-Nr.	BT	d1	A	Form	L	D
G421 50x 6x 63	50	6	63	A	165	25
G421 50x 8x 63	50	8	63	A	165	28
G421 50x10x 63	50	10	63	A	165	35
G421 50x12x 80	50	12	80	A	182	42
G421 50x14x 80	50	14	80	A	182	42
G421 50x16x 80	50	16	80	A	182	48
G421 50x18x 80	50	18	80	A	182	48
G421 50x20x 80	50	20	80	A	182	52
G421 50x25x100	50	25	100	A	202	65
G421 50x32x100	50	32	100	A	202	72
G421 50x40x105	50	40	105	A	207	90



MAS-BT

Shrink Fit Holder / BT40

Verlinkung Zubehör

Verwendung

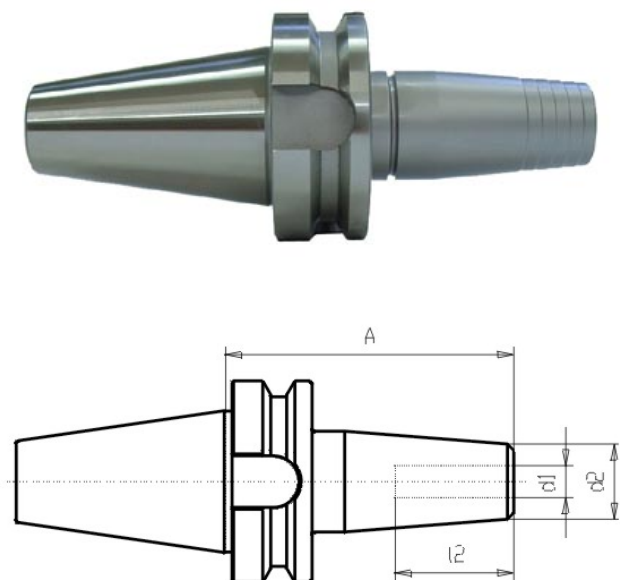
For milling-tools with cylindrical shaft type Weldon DIN 1835 Form B. Suitable for internal coolant flow Form AD/B = either central or over collar

Werkstoff

High alloyed special steel for high temperature stability with a tensile strength of 1600 - 1800 N/mm²

sonstige Bemerkungen

Form AD/B balanced G6,3 at 15.000 rpm. Max. runout 3 µm.



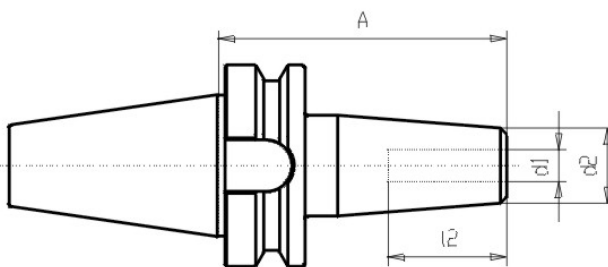
Article-Nr.	BT	d1	A	Form	l2	d2	gewuchtet +auf
G428D 40x 6x 90	40	6	90	AD/B	36	20	G6,3/15 000 rpm
G428D 40x 8x 90	40	8	90	AD/B	36	20	G6,3/15 000 rpm
G428D 40x10x 90	40	10	90	AD/B	42	24	G6,3/15 000 rpm
G428D 40x12x 90	40	12	90	AD/B	47	24	G6,3/15 000 rpm
G428D 40x14x 90	40	14	90	AD/B	47	27	G6,3/15 000 rpm
G428D 40x16x 90	40	16	90	AD/B	50	27	G6,3/15 000 rpm
G428D 40x18x 90	40	18	90	AD/B	50	33	G6,3/15 000 rpm
G428D 40x20x 90	40	20	90	AD/B	52	33	G6,3/15 000 rpm
G428D 40x25x100	40	25	100	AD/B	58	44	G6,3/15 000 rpm

Article-Nr.	BT	d1	A	Form	l2	d2	gewuchtet +auf
G428D 40x32x100	40	32	100	AD/B	58	44	G6,3/15 000 rpm



MAS-BT

Shrink Fit Holder / BT50



Verlinkung Zubehör

Verwendung

For milling-tools with zylindrical shaft type Weldon DIN 1835 Form B. Suitable for internal coolant flow Form AD/B = either central or over collar

Werkstoff

High alloyed special steel for high temperature stability with a tensile strength of 1600 - 1800 N/mm²

sonstige Bemerkungen

Form AD/B balanced G6,3 at 15.000 rpm. Max. runout 3 µm.

Article-Nr.	BT	d1	A	Form	l2	d2	gewuchtet +auf
G428D 50x 6x100	50	6	90	AD/B	36	20	G6,3/15 000 rpm
G428D 50x 8x100	50	8	90	AD/B	36	20	G6,3/15 000 rpm
G428D 50x10x100	50	10	90	AD/B	42	24	G6,3/15 000 rpm
G428D 50x12x100	50	12	90	AD/B	47	24	G6,3/15 000 rpm
G428D 50x14x100	50	14	90	AD/B	47	27	G6,3/15 000 rpm
G428D 50x16x100	50	16	90	AD/B	50	27	G6,3/15 000 rpm
G428D 50x18x100	50	18	90	AD/B	50	33	G6,3/15 000 rpm
G428D 50x20x100	50	20	90	AD/B	52	33	G6,3/15 000 rpm
G428D 50x25x110	50	25	100	AD/B	58	44	G6,3/15 000 rpm

Article-Nr.	BT	d1	A	Form	l2	d2	gewuchtet +auf
G428D 50x32x110	50	32	100	AD/B	58	44	G6,3/15 000 rpm



MAS-BT

Taper shafts / BT30

Verlinkung Zubehör

Verwendung

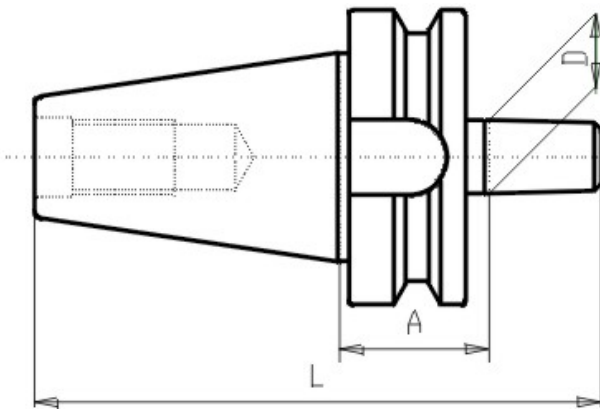
For mounting drill chuck heads

Lieferumfang

Without drill chuck head

Werkstoff

Alloyed case-hardened steel with a tensile strength of min. 800 N/mm². Carbonized according to Vickers min. 630 HV (min. 56 HRC) Shank and cone are grinded.



Article-Nr.	BT	A	Form	L	D
G430 30x12x 25	30	25	A	92	12
G430 30x16x 27	30	27	A	99	16



MAS-BT

Taper shafts / BT35



Verlinkung Zubehör

Verwendung

For mounting drill chuck heads

Lieferumfang

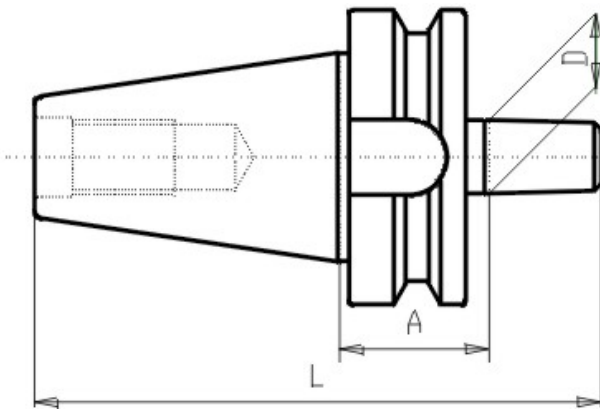
Without drill chuck head

Werkstoff

Alloyed case-hardened steel with a tensile strength of min. 800 N/mm². Carbonized according to Vickers min. 630 HV (min. 56 HRC) Shank and cone are grinded.

Besonderheit

Only sales of rest-stock - no new production



Article-Nr.	BT	A	Form	L	D
G430 35x12x 27	35	27	A	106	12
G430 35x18x 29	35	29	A	112	18



MAS-BT

Taper shafts / BT40



Verlinkung Zubehör

Verwendung

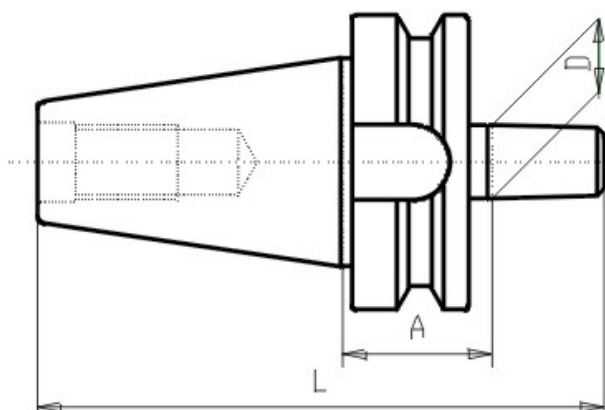
For mounting drill chuck heads

Lieferumfang

Without drill chuck head

Werkstoff

Alloyed case-hardened steel with a tensile strength of min. 800 N/mm². Carbonized according to Vickers min. 630 HV (min. 56 HRC) Shank and cone are grinded.



Article-Nr.	BT	A	Form	L	D
G430 40x12x 30	40	31	A	114	12
G430 40x16x 32	40	32	A	121	16
G430 40x18x 32	40	40	A	129	18
G430 40x22x 32	40	32	A	136	22



MAS-BT

Taper shafts / BT50

Verlinkung Zubehör

Verwendung

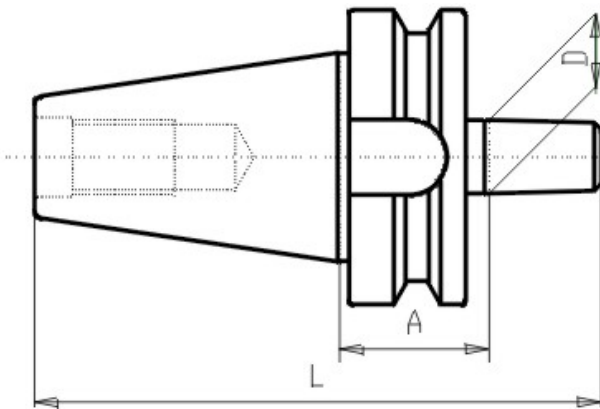
For mounting drill chuck heads

Lieferumfang

Without drill chuck head

Werkstoff

Alloyed case-hardened steel with a tensile strength of min. 800 N/mm². Carbonized according to Vickers min. 630 HV (min. 56 HRC) Shank and cone are grinded.



Article-Nr.	BT	A	Form	L	D
G430 50x16x 53	50	43	A	169	16
G430 50x18x 53	50	43	A	177	18
G430 50x22x 53	50	53	A	185	22



MAS-BT

Standard-Drill Chuck / BT40

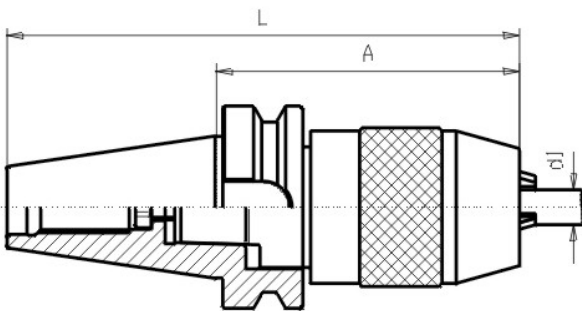
Verlinkung Zubehör

Verwendung

For clamping of toolings with cylindrical shafts
Max run-out 30 µm

Werkstoff

Alloyed case-hardened steel with a tensile strength of min. 800 N/mm². Shank, jacket, clamping jaw and other relevant pieces are hardened and grinded.



Article-Nr.	BT	d1	A	Form	L
G432 40x13	40	1-13	105	A	171
G432 40x16	40	3-16	110	A	176



MAS-BT

Standard-Drill Chuck / BT50



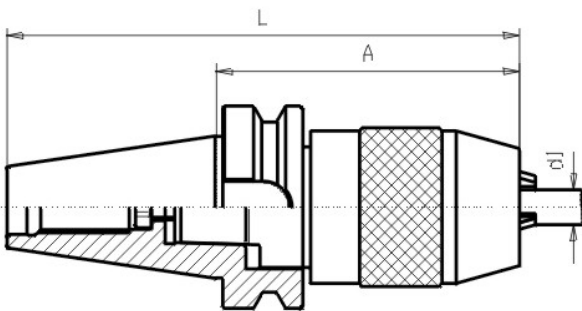
Verlinkung Zubehör

Verwendung

For clamping of toolings with cylindrical shafts
Max run-out 30 µm

Werkstoff

Alloyed case-hardened steel with a tensile strength of min. 800 N/mm². Shank, jacket, clamping jaw and other relevant pieces are hardened and grinded.

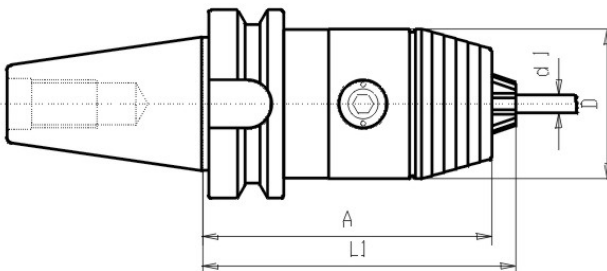


Article-Nr.	BT	d1	A	Form	L
G432 50x16	50	3-16	125	A	227



MAS-BT

High Precis. Drill Chuck / BT30



Verlinkung Zubehör

Verwendung

For clamping of toolings with cylindrical shafts
Permissible rotating speed: Clamping range 0,5 - 8 mm max. 25.000 U/min Clamping range 1 - 13 mm max. 20.000 U/min Clamping range 3 - 16 mm max. 15.000 U/min To fit these rotating speed

Lieferumfang

with spanner

Werkstoff

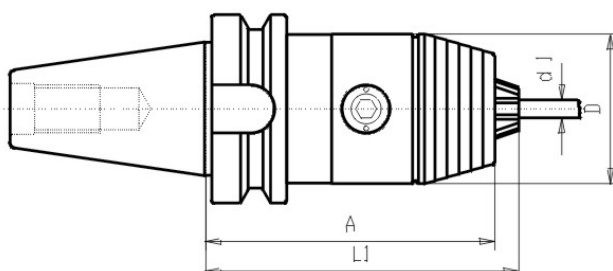
Alloyed case-hardened steel with a tensile strength of min. 800 N/mm². Shank, jacket, clamping jaw and other relevant pieces are hardened and grinded. A manual is attached to every Drill Chuck

Article-Nr.	BT	d1	A	Form	l1	D
G434 30x08	30	0,5-8	73	A	76	36
G434 30x13	30	1-13	95	A	101	50



MAS-BT

High Precis. Drill Chuck / BT40



Verlinkung Zubehör

Verwendung

For clamping of toolings with cylindrical shafts
Permissible rotating speed: Clamping range 0,5 - 8 mm max. 25.000 U/min Clamping range 1 - 13 mm max. 20.000 U/min Clamping range 3 - 16 mm max. 15.000 U/min To fit these rotating speed

Lieferumfang

with spanner

Werkstoff

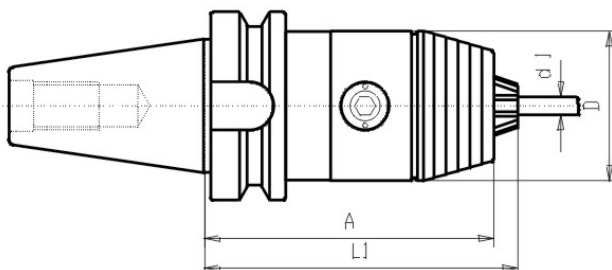
Alloyed case-hardened steel with a tensile strength of min. 800 N/mm². Shank, jacket, clamping jaw and other relevant pieces are hardened and grinded. A manual is attached to every Drill Chuck

Article-Nr.	BT	d1	A	Form	l1	D
G434 40x08	40	0,5-8	78	A	81	36
G434 40x13	40	1-13	98	A	104	50
G434 40x16	40	3-16	98	A	109	57



MAS-BT

High Precis. Drill Chuck / BT40 Form ADB



Verlinkung Zubehör

Verwendung

For clamping of toolings with cylindrical shafts
Permissible rotating speed: Clamping range 0,5 - 8 mm max. 25.000 U/min Clamping range 1 - 13 mm max. 20.000 U/min Clamping range 3 - 16 mm max. 15.000 U/min To fit these rotating speed

Lieferumfang

with spanner

Werkstoff

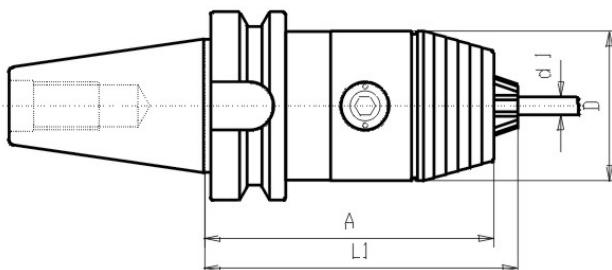
Alloyed case-hardened steel with a tensile strength of min. 800 N/mm². Shank, jacket, clamping jaw and other relevant pieces are hardened and grinded. A manual is attached to every Drill Chuck

Article-Nr.	BT	d1	A	Form	l1	D
G434D 40x13	40	1-13	98	B	104	50
G434D 40x16	40	3-16	98	B	109	57



MAS-BT

High Precis. Drill Chuck / BT50



Verlinkung Zubehör

Verwendung

For clamping of toolings with cylindrical shafts
Permissible rotating speed: Clamping range 0,5 - 8 mm max. 25.000 U/min Clamping range 1 - 13 mm max. 20.000 U/min Clamping range 3 - 16 mm max. 15.000 U/min To fit these rotating speed

Lieferumfang

with spanner

Werkstoff

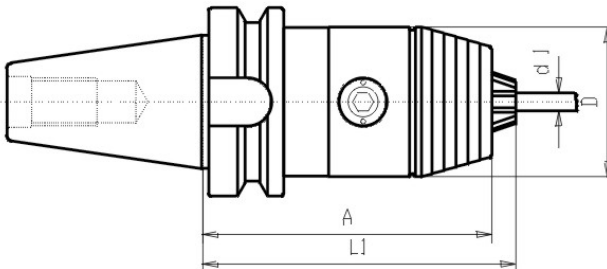
Alloyed case-hardened steel with a tensile strength of min. 800 N/mm². Shank, jacket, clamping jaw and other relevant pieces are hardened and grinded. A manual is attached to every Drill Chuck

Article-Nr.	BT	d1	A	Form	L1	D
G434 50x13	50	1-13	110	A	116	50
G434 50x16	50	3-16	110	A	121	57



MAS-BT

High Precis. Drill Chuck / BT50 Form ADB



Verlinkung Zubehör

Verwendung

For clamping of toolings with cylindrical shafts
Permissible rotating speed: Clamping range 0,5 - 8 mm max. 25.000 U/min Clamping range 1 - 13 mm max. 20.000 U/min Clamping range 3 - 16 mm max. 15.000 U/min To fit these rotating speed

Lieferumfang

with spanner

Werkstoff

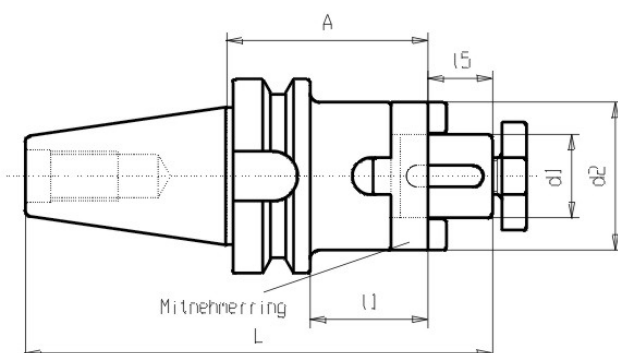
Alloyed case-hardened steel with a tensile strength of min. 800 N/mm². Shank, jacket, clamping jaw and other relevant pieces are hardened and grinded. A manual is attached to every Drill Chuck

Article-Nr.	BT	d1	A	Form	l1	D
G434D 50x13	50	1-13	110	B	116	50
G434D 50x16	50	3-16	110	B	121	57



MAS-BT

Combi Shell Mill Holder / BT30



Verlinkung Zubehör

G040, G041, G042,

Verwendung

For mounting of milling cutters with tenon drive or clutch drive

Lieferumfang

With clamping screw DIN 6367, drive ring DIN 6366 and feather key.

Werkstoff

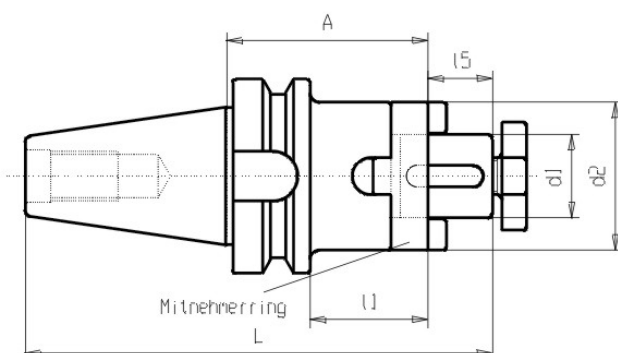
Alloyed case-hardened steel with a tensile strength of 800N/mm². Carbonized according to Vickers min. 630 HV (min. 56 HRC), Shank, journal and contact surface are grinded.

Article-Nr.	BT	d1	A	Form	I1	I5	d2	L
G440 30x13x 45	30	13	45	A	22	12	28	105
G440 30x16x 45	30	16	45	A	27	17	32	110
G440 30x22x 47	30	22	47	A	31	19	40	114
G440 30x27x 49	30	27	49	A	33	21	48	118
G440 30x32x 53	30	32	53	A	38	24	58	125



MAS-BT

Combi Shell Mill Holder / BT35



Verlinkung Zubehör

G040, G041, G042,

Verwendung

For mounting of milling cutters with tenon drive or clutch drive

Lieferumfang

With clamping screw DIN 6367, drive ring DIN 6366 and feather key.

Werkstoff

Alloyed case-hardened steel with a tensile strength of 800N/mm². Carbonized according to Vickers min. 630 HV (min. 56 HRC), Shank, journal and contact surface are grinded.

Besonderheit

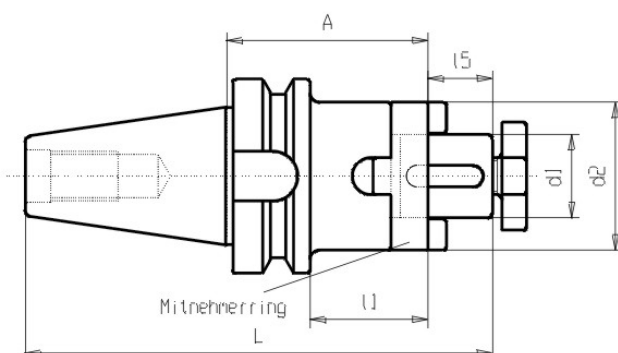
Only sales of rest-stock - no new production

Article-Nr.	BT	d1	A	Form	I1	I5	d2	L
G440 35x16x 49	35	16	49	A	27	17	32	122
G440 35x16x100	35	16	100	A	27	17	32	173
G440 35x27x 49	35	27	49	A	33	21	48	126
G440 35x27x100	35	27	100	A	33	21	48	177
G440 35x32x 64	35	32	64	A	38	24	58	144
G440 35x32x100	35	32	100	A	38	24	58	195



MAS-BT

Combi Shell Mill Holder / BT40



Verlinkung Zubehör

G040, G041, G042,

Verwendung

For mounting of milling cutters with tenon drive or clutch drive

Lieferumfang

With clamping screw DIN 6367, drive ring DIN 6366 and feather key.

Werkstoff

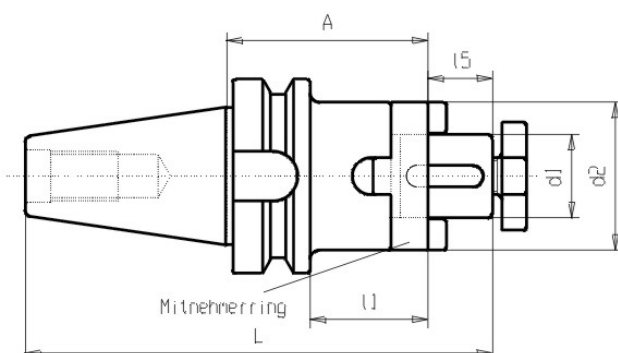
Alloyed case-hardened steel with a tensile strength of 800N/mm². Carbonized according to Vickers min. 630 HV (min. 56 HRC), Shank, journal and contact surface are grinded.

Article-Nr.	BT	d1	A	Form	I1	I5	d2	L
G440 40x13x 55	40	13	55	A	22	12	28	133
G440 40x16x 55	40	16	55	A	27	17	32	138
G440 40x16x160	40	16	160	A	27	17	32	243
G440 40x22x 55	40	22	55	A	31	19	40	140
G440 40x22x160	40	22	160	A	31	19	40	245
G440 40x27x 55	40	27	55	A	33	21	48	142
G440 40x27x160	40	27	160	A	33	21	48	247
G440 40x32x 60	40	32	60	A	38	24	58	150
G440 40x32x160	40	32	160	A	38	24	58	250
G440 40x40x 60	40	40	60	A	41	27	70	153
G440 40x40x160	40	40	160	A	41	27	70	253



MAS-BT

Combi Shell Mill Holder / BT50



Verlinkung Zubehör

G040, G041, G042,

Verwendung

For mounting of milling cutters with tenon drive or clutch drive

Lieferumfang

With clamping screw DIN 6367, drive ring DIN 6366 and feather key.

Werkstoff

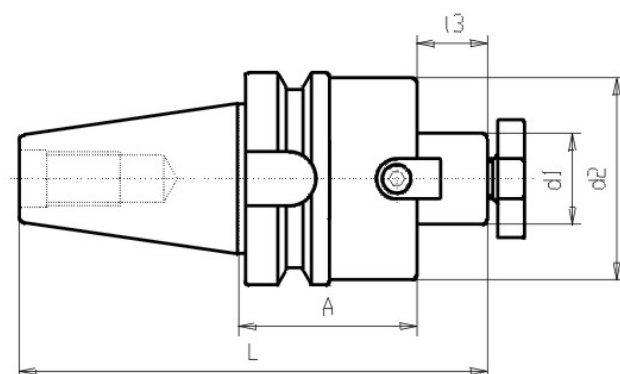
Alloyed case-hardened steel with a tensile strength of 800N/mm². Carbonized according to Vickers min. 630 HV (min. 56 HRC), Shank, journal and contact surface are grinded.

Article-Nr.	BT	d1	A	Form	I1	I5	d2	L
G440 50x16x 70	50	16	70	A	27	17	32	189
G440 50x16x100	50	16	100	A	27	17	32	219
G440 50x16x160	50	16	160	A	27	17	32	279
G440 50x22x 70	50	22	70	A	31	19	40	191
G440 50x22x100	50	22	100	A	31	19	40	221
G440 50x22x160	50	22	160	A	31	19	40	281
G440 50x27x 70	50	27	70	A	33	21	48	193
G440 50x27x160	50	27	160	A	33	21	48	283
G440 50x32x 70	50	32	70	A	38	24	58	196
G440 50x32x100	50	32	100	A	38	24	58	226
G440 50x32x160	50	32	160	A	38	24	58	286
G440 50x40x 70	50	40	70	A	41	27	70	199
G440 50x40x160	50	40	160	A	41	27	70	289
G440 50x50x 70	50	50	70	A	46	30	90	202



MAS-BT

Face Mill Holder / BT40



Verlinkung Zubehör

G041, G042,

Verwendung

For mounting inserted tool milling cutters with clutch drive.

Lieferumfang

With two fixed drive keys and clamping screw DIN 6367.

Werkstoff

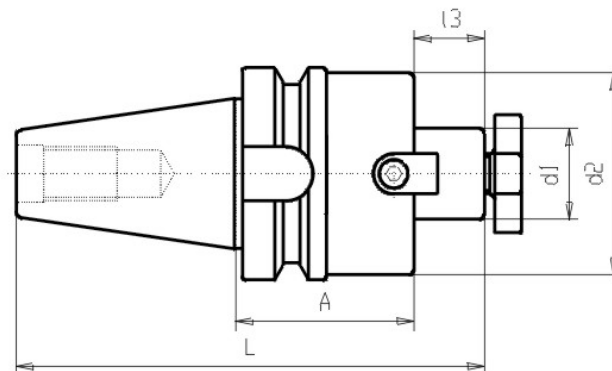
Alloyed case-hardened steel with a tensile strength of 800N/mm². Carbonized according to Vickers min. 630 HV (min. 56 HRC), Shank, journal and contact surface are grinded.

Article-Nr.	BT	d1	A	Form	l3	d2	L
G442 40x16x 45	40	16	45	A	17	50	128
G442 40x16x100	40	16	100	A	17	50	183
G442 40x22x 45	40	22	45	A	19	50	130
G442 40x22x100	40	22	100	A	19	50	185
G442 40x22x160	40	22	160	A	19	50	245
G442 40x27x 45	40	27	45	A	21	50	132
G442 40x27x100	40	27	100	A	21	50	187
G442 40x32x 50	40	32	50	A	24	78	140
G442 40x32x100	40	32	100	A	24	78	190
G442 40x40x 55	40	40	55	A	27	89	148
G442 40x40x100	40	40	100	A	27	89	193
G442 40x50x 80	40	50	80	A	30	129	176



MAS-BT

Face Mill Holder / BT50



Verlinkung Zubehör

G041, G042,

Verwendung

For mounting inserted tool milling cutters with clutch drive.

Lieferumfang

With two fixed drive keys and clamping screw DIN 6367.

Werkstoff

Alloyed case-hardened steel with a tensile strength of 800N/mm². Carbonized according to Vickers min. 630 HV (min. 56 HRC), Shank, journal and contact surface are grinded.

Article-Nr.	BT	d1	A	Form	I3	d2	L
G442 50x22x 55	50	22	55	A	19	50	176
G442 50x22x100	50	22	100	A	19	50	221
G442 50x27x 55	50	27	55	A	21	60	178
G442 50x27x100	50	27	100	A	21	60	223
G442 50x32x 55	50	32	55	A	24	78	181
G442 50x32x100	50	32	100	A	24	78	226
G442 50x40x 55	50	40	55	A	27	89	184
G442 50x40x100	50	40	100	A	27	89	229
G442 50x50x 80	50	50	50	A	30	129	212
G442 50x60x 80	50	60	80	A	40	129	222



MAS-BT

Chuck f. threaded type cutter / BT40 G6,3/10.000 rpm

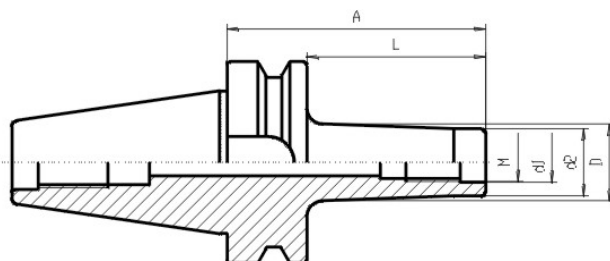
Verlinkung Zubehör

Verwendung

For clamping threaded type cutter. Form AD/B balanced to 6,3 at 10.000 rpm

Werkstoff

Alloyed case-hardened steel with a tensile strength of 800N/mm². Carbonized according to Vickers min. 630 HV (min. 56 HRC)



Article-Nr.	BT	d1	A	d2	L	D	Gewinde
G447D 40x06x 52	40	6.5	52	10	25	17	M6
G447D 40x06x 77	40	6.5	77	10	50	23	M6
G447D 40x06x102	40	6.5	102	10	75	25	M6
G447D 40x08x 52	40	8.5	52	13	25	18	M8
G447D 40x08x 77	40	8.5	77	13	50	23	M8
G447D 40x08x102	40	8.5	102	13	75	25	M8
G447D 40x08x127	40	8.5	127	13	100	30	M8
G447D 40x10x 52	40	10.5	52	18	25	23	M10
G447D 40x10x102	40	10.5	102	18	75	30	M10
G447D 40x12x 52	40	12.5	52	21	25	24	M12
G447D 40x12x102	40	12.5	102	21	75	35	M12
G447D 40x12x152	40	12.5	152	21	125	43	M12
G447D 40x16x 52	40	17	52	29	25	29	M16
G447D 40x16x102	40	17	102	29	75	35	M16
G447D 40x16x152	40	17	152	29	125	44	M16



MAS-BT

Chuck f. threaded type cutter / BT50 G6,3/10.000 rpm

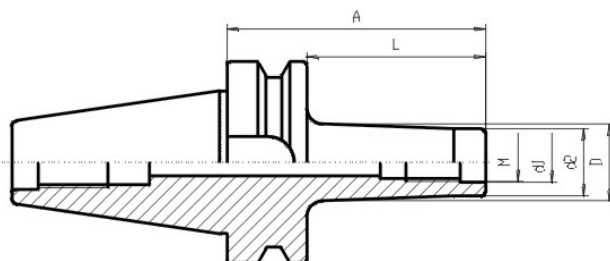
Verlinkung Zubehör

Verwendung

For clamping threaded type cutter. Form AD/B balanced to 6,3 at 10.000 rpm

Werkstoff

Alloyed case-hardened steel with a tensile strength of 800N/mm². Carbonized according to Vickers min. 630 HV (min. 56 HRC)



Article-Nr.	BT	d1	A	d2	L	D	Gewinde
G447 50x08x 88	50	8.5	50	13	88	23	M8
G447 50x08x138	50	8.5	100	13	138	30	M8
G447 50x08x188	50	8.5	150	13	188	35	M8
G447 50x10x 88	50	10.5	50	18	88	25	M10
G447 50x10x138	50	10.5	100	18	138	35	M10
G447 50x10x188	50	10.5	150	18	188	38	M10
G447 50x12x 88	50	12.5	50	21	88	34	M12
G447 50x12x138	50	12.5	100	21	138	41	M12
G447 50x12x188	50	12.5	150	21	188	50	M12
G447 50x16x 88	50	17	50	29	88	34	M16
G447 50x16x138	50	17	100	29	138	41	M16
G447 50x16x188	50	17	150	29	188	50	M16



MAS-BT

Morse Taper Adaptor / BT30



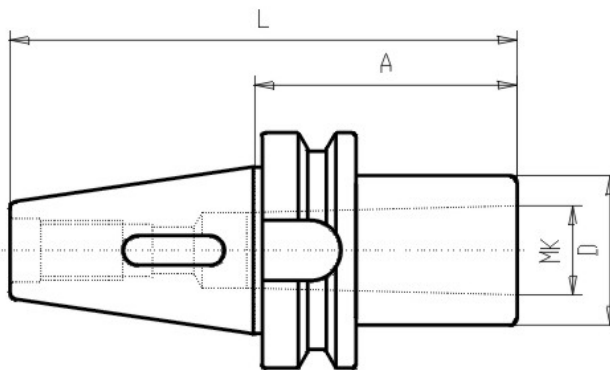
Verlinkung Zubehör

Verwendung

For toolings with morse taper and flat tang

Werkstoff

Alloyed case-hardened steel with a tensile strength of 800N/mm². Carnonized according to Vickers min. 630 HV (min. 56 HRC), Outside shank and inside morse taper are grinded.



Article-Nr.	BT	A	Form	L	D	Innen MK
G460 30x1x 45	30	45	AD	93	25	1
G460 30x2x 60	30	60	AD	108	32	2
G460 30x3x 77	30	77	AD	125	40	3



MAS-BT

Morse Taper Adaptor / BT35



Verlinkung Zubehör

Verwendung

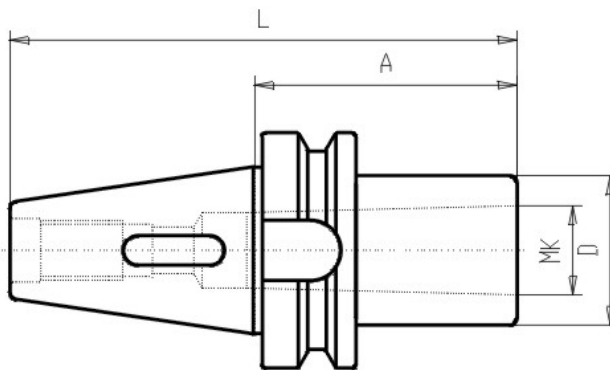
For toolings with morse taper and flat tang

Werkstoff

Alloyed case-hardened steel with a tensile strength of 800N/mm². Carnonized according to Vickers min. 630 HV (min. 56 HRC), Outside shank and inside morse taper are grinded.

Besonderheit

Only sales of rest-stock - no new production



Article-Nr.	BT	A	Form	L	D	Innen MK
G460 35x1x 45	35	45	AD	116	25	1
G460 35x3x 75	35	75	AD	146	40	3



MAS-BT

Morse Taper Adaptor / BT40



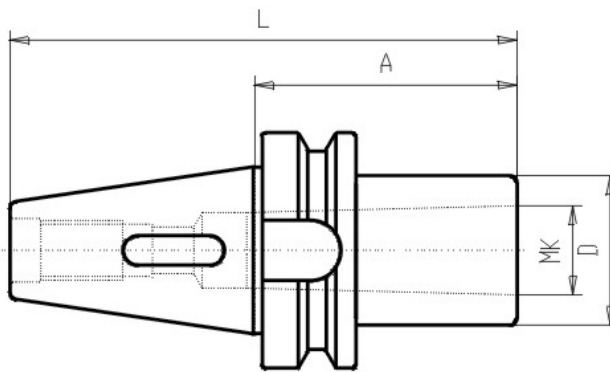
Verlinkung Zubehör

Verwendung

For toolings with morse taper and flat tang

Werkstoff

Alloyed case-hardened steel with a tensile strength of 800N/mm². Carnonized according to Vickers min. 630 HV (min. 56 HRC), Outside shank and inside morse taper are grinded.



Article-Nr.	BT	A	Form	L	D	Innen MK
G460 40x1x 50	40	50	AD	116	25	1
G460 40x1x160	40	160	AD	226	25	1
G460 40x2x 50	40	50	AD	116	32	2
G460 40x3x 70	40	70	AD	136	40	3
G460 40x4x 92	40	92	AD	158	48	4



MAS-BT

Morse Taper Adaptor / BT40 Form ADB



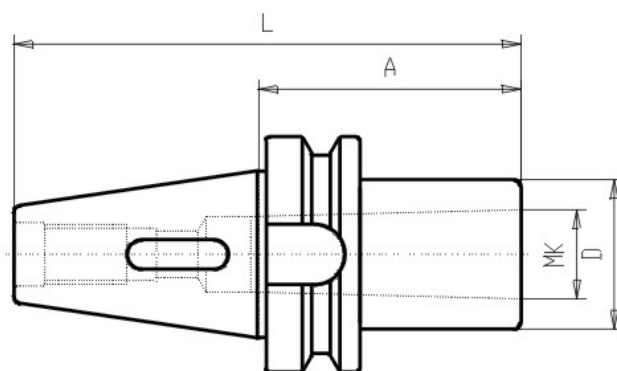
Verlinkung Zubehör

Verwendung

For toolings with morse taper and flat tang

Werkstoff

Alloyed case-hardened steel with a tensile strength of 800N/mm². Carnonized according to Vickers min. 630 HV (min. 56 HRC), Outside shank and inside morse taper are grinded.



Article-Nr.	BT	A	Form	L	D	Innen MK
G460D40x1x 45	40	45	B	111	25	1
G460D40x2x 50	40	50	B	116	32	2
G460D40x3x 70	40	70	B	136	40	3
G460D40x4x 95	40	95	B	161	48	4



MAS-BT

Morse Taper Adaptor / BT50



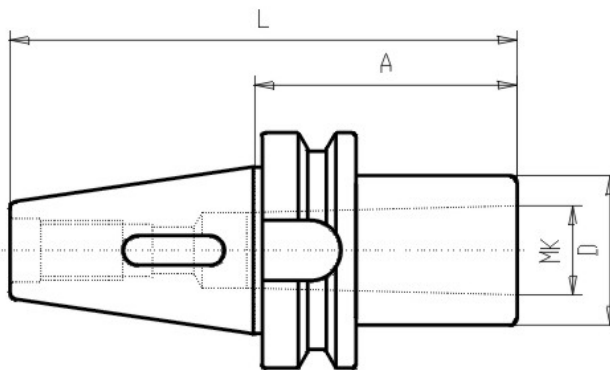
Verlinkung Zubehör

Verwendung

For toolings with morse taper and flat tang

Werkstoff

Alloyed case-hardened steel with a tensile strength of 800N/mm². Carnonized according to Vickers min. 630 HV (min. 56 HRC), Outside shank and inside morse taper are grinded.



Article-Nr.	BT	A	Form	L	D	Innen MK
G460 50x1x 45	50	45	AD	147	25	1
G460 50x2x 50	50	50	AD	152	32	2
G460 50x3x 65	50	65	AD	167	40	3
G460 50x4x 95	50	95	AD	197	48	4
G460 50x5x105	50	105	AD	207	63	5



MAS-BT

Morse Taper Adaptor / BT50 Form ADB



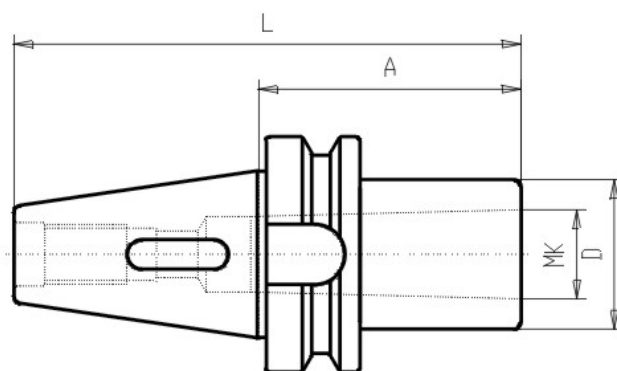
Verlinkung Zubehör

Verwendung

For toolings with morse taper and flat tang

Werkstoff

Alloyed case-hardened steel with a tensile strength of 800N/mm². Carnonized according to Vickers min. 630 HV (min. 56 HRC), Outside shank and inside morse taper are grinded.



Article-Nr.	BT	A	Form	L	D	Innen MK
G460D50x1x 45	50	45	B	147	25	1
G460D50x2x 60	50	60	B	162	32	2
G460D50x3x 65	50	65	B	167	40	3
G460D50x4x 95	50	95	B	197	48	4
G460D50x5x105	50	105	B	207	63	5



MAS-BT

Draw Thread Morse Taper Adap. / BT30



Verlinkung Zubehör

Verwendung

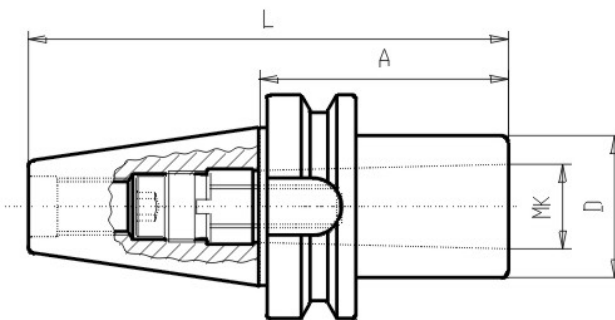
For toolings with morse taper and thread

Lieferumfang

with internal clamping screw

Werkstoff

Alloyed case-hardened steel with a tensile strength of 800N/mm². Carbonized according to Vickers min. 630 HV (min. 56 HRC), Outside shank and inside morse taper are grinded.



Article-Nr.	BT	A	Form	L	D	Innen MK
G461 30x1x 45	30	45	A	93	25	1
G461 30x2x 60	30	60	A	108	32	2
G461 30x3x 77	30	77	A	125	40	3



MAS-BT

Draw Thread Morse Taper Adap. / BT40



Verlinkung Zubehör

Verwendung

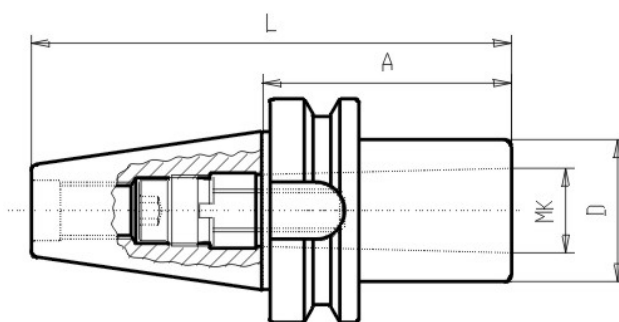
For toolings with morse taper and thread

Lieferumfang

with internal clamping screw

Werkstoff

Alloyed case-hardened steel with a tensile strength of 800N/mm². Carbonized according to Vickers min. 630 HV (min. 56 HRC), Outside shank and inside morse taper are grinded.



Article-Nr.	BT	A	Form	L	D	Innen MK
G461 40x1x 50	40	50	A	116	25	1
G461 40x2x 50	40	50	A	116	32	2
G461 40x3x 70	40	70	A	136	40	3
G461 40x4x 95	40	95	A	161	48	4



MAS-BT

Draw Thread Morse Taper Adap. / BT50



Verlinkung Zubehör

Verwendung

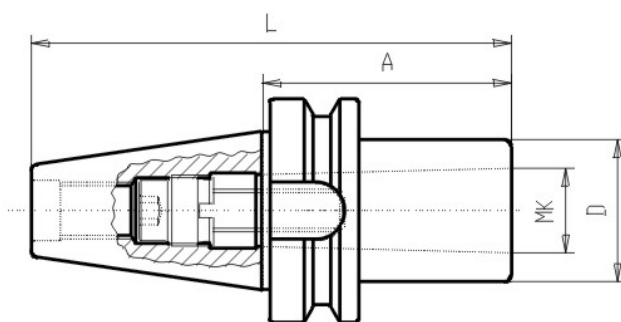
For toolings with morse taper and thread

Lieferumfang

with internal clamping screw

Werkstoff

Alloyed case-hardened steel with a tensile strength of 800N/mm². Carbonized according to Vickers min. 630 HV (min. 56 HRC), Outside shank and inside morse taper are grinded.



Article-Nr.	BT	A	Form	L	D	Innen MK
G461 50x1x 45	50	45	A	147	25	1
G461 50x2x 55	50	55	A	157	32	2
G461 50x3x 65	50	65	A	167	40	3
G461 50x4x 80	50	80	A	182	48	4
G461 50x5x110	50	110	A	212	63	5



MAS-BT

Reduction Arbor / BT40



Verlinkung Zubehör

Verwendung

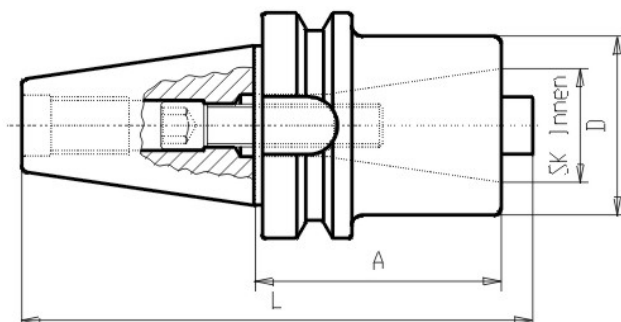
For reducing BT to BT / SK

Lieferumfang

with internal clamping screw

Werkstoff

Alloyed case-hardened steel with a tensile strength of 800N/mm². Carbonized according to Vickers min. 630 HV (min. 56 HRC), Outside shank and inside cone are grinded.



Article-Nr.	BT	Innen SK	A	Form	L	D
G462 40x30x 60	40	30	60	A	134	50
G462 40x40x100	40	40	100	A	176	70



MAS-BT

Reduction Arbor / BT50



Verlinkung Zubehör

Verwendung

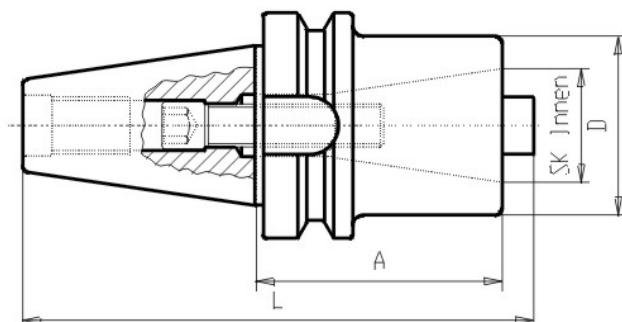
For reducing BT to BT / SK

Lieferumfang

with internal clamping screw

Werkstoff

Alloyed case-hardened steel with a tensile strength of 800N/mm². Carbonized according to Vickers min. 630 HV (min. 56 HRC), Outside shank and inside cone are grinded.



Article-Nr.	BT	Innen SK	A	Form	L	D
G462 50x30x 60	50	30	60	A	169	50
G462 50x40x 80	50	40	70	A	183	70
G462 50x50x120	50	50	120	A	236	97

