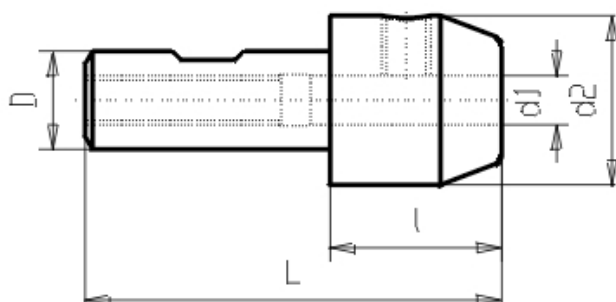




Attachements

Reduction Arbor / Drm 20



Verwendung

for clamping cylindric shafts according DIN 1835

Lieferumfang

with 1 clamping screw. dia 25mm with 2 clamping screws

Werkstoff

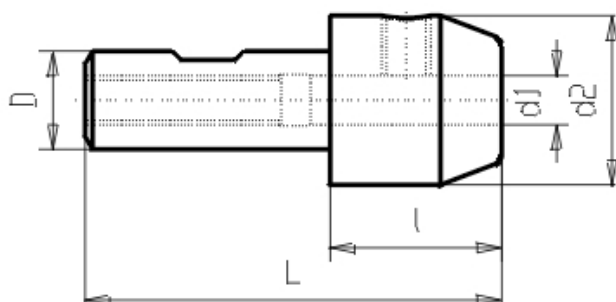
Alloyed case-hardened steel with a tensile strength of 800N/mm². Carbonized according to Vickers min. 630 HV (min. 56 HRC), Shank, journal and contact surface are grinded.

Article-Nr.	d1	l1	d2	L	D
G010 20x 6	6	25	25	75	20
G010 20x 8	8	27	28	77	20
G010 20x10	10	30	35	80	20
G010 20x12	12	35	42	85	20



Attachements

Reduction Arbor / Drm 32



Verwendung

for clamping cylindric shafts according DIN 1835

Lieferumfang

with 1 clamping screw. dia 25mm with 2 clamping screws

Werkstoff

Alloyed case-hardened steel with a tensile strength of 800N/mm². Carbonized according to Vickers min. 630 HV (min. 56 HRC), Shank, journal and contact surface are grinded.

Article-Nr.	d1	l1	d2	L	D
G010 32x 6	6	30	25	90	32
G010 32x 8	8	30	28	90	32
G010 32x10	10	35	35	95	32
G010 32x12	12	35	42	95	32
G010 32x14	14	35	42	95	32
G010 32x16	16	40	48	100	32
G010 32x18	18	40	48	100	32
G010 32x20	20	40	52	100	32
G010 32x22	22	40	52	100	32
G010 32x25	25	71	63	131	32



Attachements

Clamping Screw / Screw f. Weldon

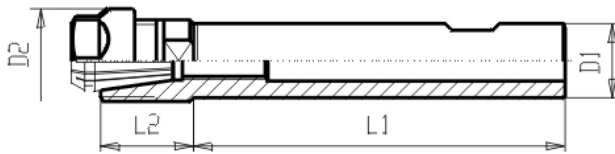


Article-Nr.
G010B 6 M6
G010B 8 M8
G010B 10 M10
G010B 12/14 M12
G010B 16/18 M14
G010B 20 kurZ
G010B 20/22 M16
G010B 25 kurZ
G010B 25 M18
G010B 32 M20
G010B 40 M20



Attachements

Cylindr. Collet Chuck ER / Shaft Dia 8



Verwendung

For clamping toolings with cylindrical shaft. To be clamped in End-Mill Holders Weldon or Collet Chucks.

Lieferumfang

With nut

Werkstoff

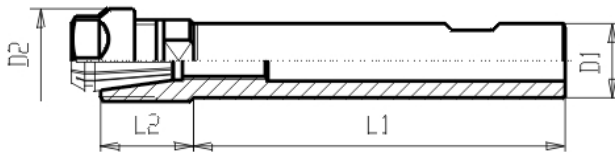
Alloyed case-hardened steel with a tensile strength of 800N/mm². Carbonized according to Vickers min. 630 HV (min. 56 HRC),

Article-Nr.	d1	l1	D	Typ ER	Spannber. ER
G011 8x 8mx125	8	125	12	8	1-5



Attachements

Cylindr. Collet Chuck ER / Shaft Dia 10



Verwendung

For clamping toolings with cylindrical shaft. To be clamped in End-Mill Holders Weldon or Collet Chucks.

Lieferumfang

With nut

Werkstoff

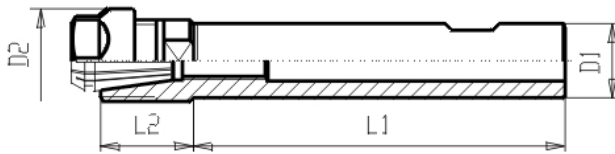
Alloyed case-hardened steel with a tensile strength of 800N/mm². Carbonized according to Vickers min. 630 HV (min. 56 HRC),

Article-Nr.	d1	l1	D	Typ ER	Spannber. ER
G011 10x 8mx 80	10	80	12	8	1-5
G011 10x 8mx120	10	120	12	8	1-5



Attachements

Cylindr. Collet Chuck ER / Shaft Dia 12



Verwendung

For clamping toolings with cylindrical shaft. To be clamped in End-Mill Holders Weldon or Collet Chucks.

Lieferumfang

With nut

Werkstoff

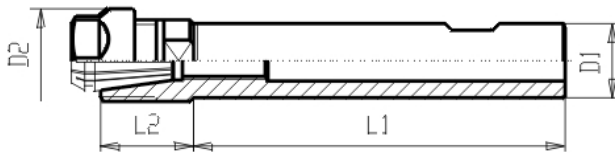
Alloyed case-hardened steel with a tensile strength of 800N/mm². Carbonized according to Vickers min. 630 HV (min. 56 HRC),

Article-Nr.	d1	l1	D	Typ ER	Spannber. ER
G011 12x 8mx 80	12	80	12	8	1-5
G011 12x 8mx125	12	125	12	8	1-5
G011 12x11mx125	12	125	16	11	1-7



Attachements

Cylindr. Collet Chuck ER / Shaft Dia 16



Verwendung

For clamping toolings with cylindrical shaft. To be clamped in End-Mill Holders Weldon or Collet Chucks.

Lieferumfang

With nut

Werkstoff

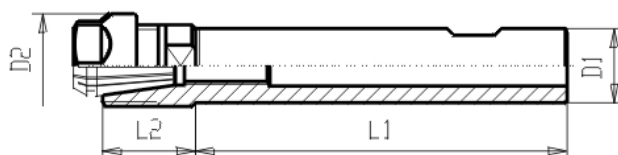
Alloyed case-hardened steel with a tensile strength of 800N/mm². Carbonized according to Vickers min. 630 HV (min. 56 HRC),

Article-Nr.	d1	l1	D	Typ ER	Spannber. ER
G011 16x11mx125	16	125	16	11	1-7



Attachements

Cylindr. Collet Chuck ER / Shaft Dia 20



Verwendung

For clamping toolings with cylindrical shaft. To be clamped in End-Mill Holders Weldon or Collet Chucks.

Lieferumfang

With nut

Werkstoff

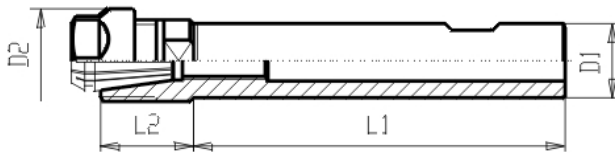
Alloyed case-hardened steel with a tensile strength of 800N/mm². Carbonized according to Vickers min. 630 HV (min. 56 HRC),

Article-Nr.	d1	l1	D	Typ ER	Spannber. ER
G011 20x16mx140	20	140	22	16	1-10
G011 20x16x100	20	100	32	16	1-10
G011 20x25mx150	20	150	35	25	2-16



Attachements

Cylindr. Collet Chuck ER / Shaft Dia 25



Verwendung

For clamping toolings with cylindrical shaft. To be clamped in End-Mill Holders Weldon or Collet Chucks.

Lieferumfang

With nut

Werkstoff

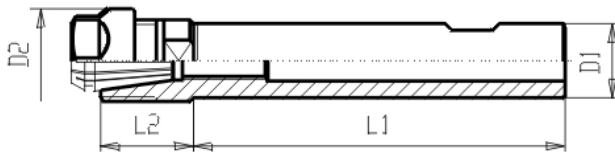
Alloyed case-hardened steel with a tensile strength of 800N/mm². Carbonized according to Vickers min. 630 HV (min. 56 HRC),

Article-Nr.	d1	l1	D	Typ ER	Spannber. ER
G011 25x25mx150	25	150	35	25	2-16



Attachements

Cylindr. Collet Chuck ER / Shaft Dia 30



Verwendung

For clamping toolings with cylindrical shaft. To be clamped in End-Mill Holders Weldon or Collet Chucks.

Lieferumfang

With nut

Werkstoff

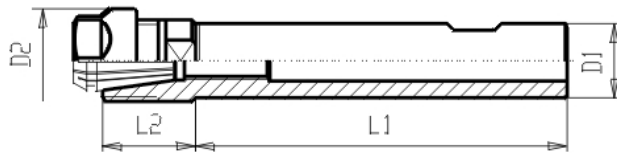
Alloyed case-hardened steel with a tensile strength of 800N/mm². Carbonized according to Vickers min. 630 HV (min. 56 HRC),

Article-Nr.	d1	l1	D	Typ ER	Spannber. ER
G011 30x25mx180	30	180	35	25	2-16



Attachements

Cylindr. Collet Chuck ER / Shaft Dia 32



Verwendung

For clamping toolings with cylindrical shaft. To be clamped in End-Mill Holders Weldon or Collet Chucks.

Lieferumfang

With nut

Werkstoff

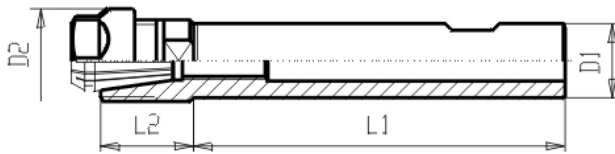
Alloyed case-hardened steel with a tensile strength of 800N/mm². Carbonized according to Vickers min. 630 HV (min. 56 HRC),

Article-Nr.	d1	l1	D	Typ ER	Spannber. ER
G011 32x25x180	32	180	35	25	2-16
G011 32x32	32	70	50	32	2-20



Attachements

Cylindr. Collet Chuck ER / Shaft Dia 40



Verwendung

For clamping toolings with cylindrical shaft. To be clamped in End-Mill Holders Weldon or Collet Chucks.

Lieferumfang

With nut

Werkstoff

Alloyed case-hardened steel with a tensile strength of 800N/mm². Carbonized according to Vickers min. 630 HV (min. 56 HRC),

Article-Nr.	d1	l1	D	Typ ER	Spannber. ER
G011 40x25	40	70	42	25	2-16
G011 40x32	40	80	50	32	2-20



Attachements

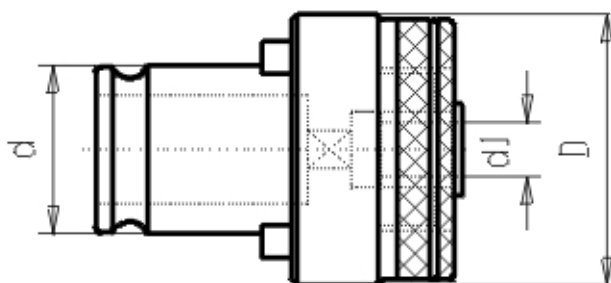
Tapping Collets / Size 1 with clutch

Verwendung

For clamping of tap-drillers accoring DIN 371 and DIN 376

Lieferumfang

With saftey clutch



Article-Nr.	d.	ED	Satz	Z+Größe	Schaft Durchm. d1	Vierkant
G013 1mit 2,8	19	32	1		2.8	2.1
G013 1mit 3,15y	19	32	1		3.15	2.5
G013 1mit 3,5	19	32	1		3.5	2.7
G013 1mit 4,5	19	32	1		4.5	3.4
G013 1mit 4x3	19	32	1		4	3
G013 1mit 4x3,2	19	32	1		4	3.2
G013 1mit 5 y	19	32	1		5	4
G013 1mit 6	19	32	1		6	4.9
G013 1mit 6 M5	19	32	1		6	4.9
G013 1mit 6,3	19	32	1		6.3	5
G013 1mit 7	19	32	1		7	5.5
G013 1mit 8	19	32	1		8	6.2
G013 1mit 9	19	32	1		9	7
G013 1mit10	19	32	1		10	8
G013 1mit11 y	19	32	1		11	9
G013 1mit12 y	19	32	1		12	9



Attachements

Tapping Collets / Size 1 without clutch

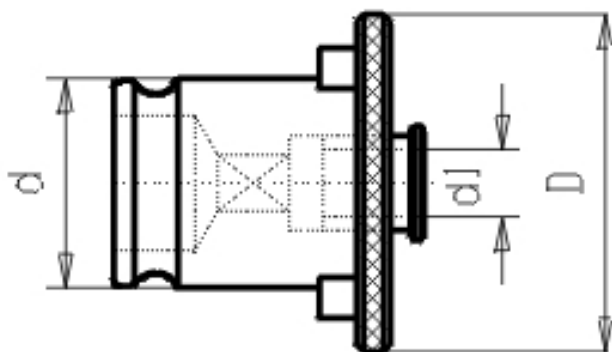


Verwendung

For clamping of tap-drillers accoring DIN 371 and DIN 376

Lieferumfang

Without saftey clutch



Article-Nr.	d.	ED	Satz	Z+Größe	Schaft Durchm. d1	Vierkant
G013 1ohn 2,8	19	32	1		2.8	2.1
G013 1ohn 3,15y	19	32	1		3.15	2.5
G013 1ohn 3,5	19	32	1		3.5	2.7
G013 1ohn 4,5	19	32	1		4.5	3.4
G013 1ohn 4x3	19	32	1		4	3
G013 1ohn 4x3,2	19	32	1		4	3.2
G013 1ohn 5 y	19	32	1		5	4
G013 1ohn 6	19	32	1		6	4.9
G013 1ohn 6,3	19	32	1		6.3	5
G013 1ohn 7	19	32	1		7	5.5
G013 1ohn 8	19	32	1		8	6.2
G013 1ohn 9	19	32	1		9	7
G013 1ohn10	19	32	1		10	8
G013 1ohn11 y	19	32	1		11	9
G013 1ohn12 y	19	32	1		12	9



Attachements

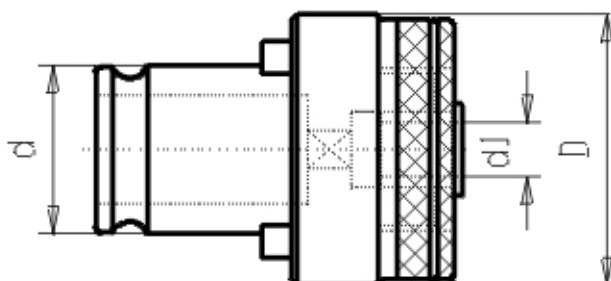
Tapping Collets / Size 2 with clutch

Verwendung

For clamping of tap-drillers accoring DIN 371 and DIN 376

Lieferumfang

With saftey clutch



Article-Nr.	d.	ED	Satz	Z+Größe	Schaft Durchm. d1	Vierkant
G013 2mit 6	31	50	2		6	4.9
G013 2mit 6,3 y	31	50	2		6.3	5
G013 2mit 7	31	50	2		7	5.5
G013 2mit 8	31	50	2		8	6.2
G013 2mit 9	31	50	2		9	7
G013 2mit10	31	50	2		10	8
G013 2mit11	31	50	2		11	9
G013 2mit11,2 y	31	50	2		11.2	9
G013 2mit12	31	50	2		12	9
G013 2mit12,5 y	31	50	2		12.5	10
G013 2mit14x11	31	50	2		14	11
G013 2mit14x112	31	50	2		14	11.2
G013 2mit16x12	31	50	2		16	12
G013 2mit16x125	31	50	2		16	12.5
G013 2mit18 y	31	50	2		18	14.5
G013 2mit20 y	31	50	2		20	16



Attachements

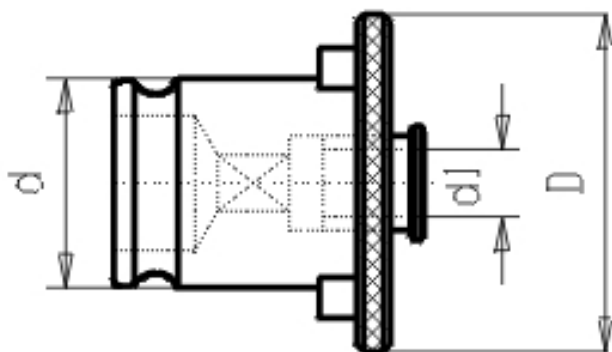
Tapping Collets / Size 2 without clutch

Verwendung

For clamping of tap-drillers accoring DIN 371 and DIN 376

Lieferumfang

Without saftey clutch



Article-Nr.	d.	ED	Satz	Größe	Schaft Durchm. d1	Vierkant
G013 2ohn 6	31	50	2		6	4.9
G013 2ohn 6,3 y	31	50	2		6.3	5
G013 2ohn 7	31	50	2		7	5.5
G013 2ohn 8	31	50	2		8	6.2
G013 2ohn 9	31	50	2		9	7
G013 2ohn10	31	50	2		10	8
G013 2ohn11	31	50	2		11	9
G013 2ohn11,2 y	31	50	2		11.2	9
G013 2ohn12	31	50	2		12	9
G013 2ohn12,5 y	31	50	2		12.5	10
G013 2ohn14x11	31	50	2		14	11
G013 2ohn14x112	31	50	2		14	11.2
G013 2ohn16x12	31	50	2		16	12
G013 2ohn16x125	31	50	2		16	12.5
G013 2ohn18 y	31	50	2		18	14.5

Article-Nr.	d.	Ein- satz	Zu- Größe	Schaft Durchm. d1	Vierkant
G013 2ohn20 y	31	50	2	20	16



Attachements

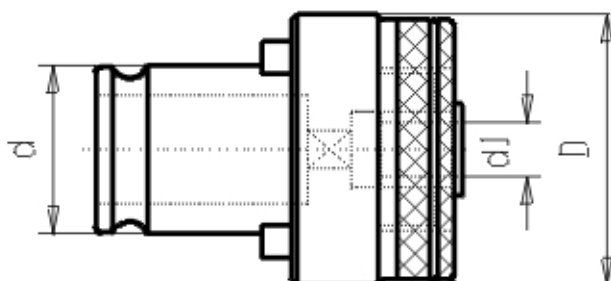
Tapping Collets / Size 3 with clutch

Verwendung

For clamping of tap-drillers accoring DIN 371 and DIN 376

Lieferumfang

With saftey clutch



Article-Nr.	d.	ED	Satz	Z+Größe	Schaft Durchm. d1	Vierkant
G013 3mit 9 y	48	72	3		9	7
G013 3mit11	48	72	3		11	9
G013 3mit12	48	72	3		12	9
G013 3mit14	48	72	3		14	11
G013 3mit16	48	72	3		16	12
G013 3mit18x145	48	72	3		18	14.5
G013 3mit18x14y	48	72	3		18	14
G013 3mit20	48	72	3		20	16
G013 3mit22	48	72	3		22	18
G013 3mit25	48	72	3		25	20
G013 3mit28 y	48	72	3		28	22



Attachements

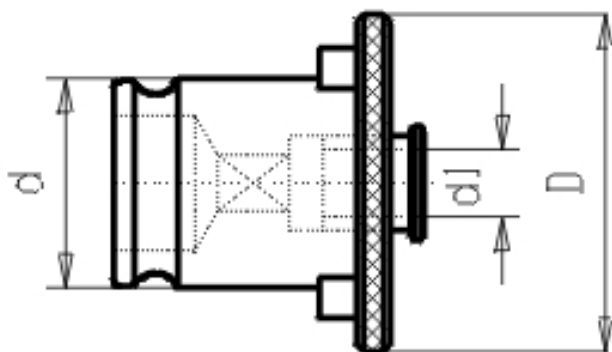
Tapping Collets / Size 3 without clutch

Verwendung

For clamping of tap-drillers accoring DIN 371 and DIN 376

Lieferumfang

Without saftey clutch



Article-Nr.	d.	ED	satZ	Größe Schaft Durchm. d1	Vierkant
G013 3ohn 9 y	48	72	3	9	7
G013 3ohn11	48	72	3	11	9
G013 3ohn12	48	72	3	12	9
G013 3ohn14	48	72	3	14	11
G013 3ohn16	48	72	3	16	12
G013 3ohn18x145	48	72	3	18	14.5
G013 3ohn18x14y	48	72	3	18	14
G013 3ohn20	48	72	3	20	16
G013 3ohn22	48	72	3	22	18
G013 3ohn25	48	72	3	25	20
G013 3ohn28 y	48	72	3	28	22



Attachements

Collet f. Hydraulic Chuck / For Dia 20mm



Verwendung

Collet for Hydraulic Chuck for clamping cylindrical shafts

Lieferumfang

Without safety clutch

Article-Nr.	d1	l1	L	D
G014a 20x 6	6	49	52	20
G014a 20x 8	8	49	52	20
G014a 20x10	10	49	52	20
G014a 20x12	12	49	52	20
G014a 20x14	14	49	52	20
G014a 20x16	16	49	52	20



Attachements

Collet f. Hydraulic Chuck / For Dia 32 mm



Verwendung

Collet for Hydraulic Chuck for clamping cylindrical shafts

Lieferumfang

Without safety clutch

Article-Nr.	d1	l1	L	D
G014a 32x10	10	59	63	32
G014a 32x12	12	59	63	32
G014a 32x14	14	59	63	32
G014a 32x16	16	59	63	32
G014a 32x18	18	59	63	32
G014a 32x20	20	59	63	32
G014a 32x25	25	59	63	32



Attachements

Collets Type OZ / Type OZ16

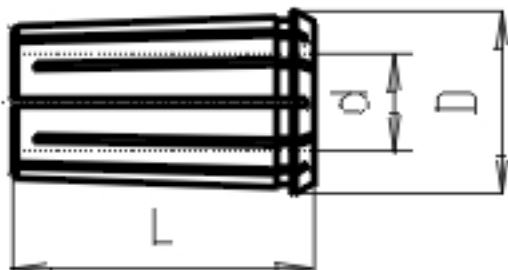


Verwendung

for clamping cylindrical shafts, for collet chucks system Ortlieb DIN 6388

Werkstoff

Alloyed case-hardened steel with a tensile strength of 800N/mm². Carbonized 44+4 HRC), Grinded. Double slotted



Article-Nr.	L	d.	D	Typ OZ
G016 16x 2	40	2	25.5	415E
G016 16x 2,5	40	2.5	25.5	415E
G016 16x 3,0	40	3	25.5	415E
G016 16x 3,5	40	3.5	25.5	415E
G016 16x 4,0	40	4	25.5	415E
G016 16x 4,5	40	4.5	25.5	415E
G016 16x 5,0	40	5	25.5	415E
G016 16x 5,5	40	5.5	25.5	415E
G016 16x 6,0	40	6	25.5	415E
G016 16x 6,5	40	6.5	25.5	415E
G016 16x 7,0	40	7	25.5	415E
G016 16x 7,5	40	7.5	25.5	415E
G016 16x 8,0	40	8	25.5	415E
G016 16x 8,5	40	8.5	25.5	415E
G016 16x 9,0	40	9	25.5	415E
G016 16x 9,5	40	9.5	25.5	415E
G016 16x10,0	40	10	25.5	415E
G016 16x10,5	40	10.5	25.5	415E
G016 16x11,0	40	11	25.5	415E
G016 16x11,5	40	11.5	25.5	415E
G016 16x12,0	40	12	25.5	415E

Article-Nr.	L	d.	D	Typ OZ
G016 16x12,5	40	12.5	25.5	415E
G016 16x13,0	40	13	25.5	415E
G016 16x13,5	40	13.5	25.5	415E
G016 16x14,0	40	14	25.5	415E
G016 16x14,5	40	14.5	25.5	415E
G016 16x15,0	40	15	25.5	415E
G016 16x15,5	40	15.5	25.5	415E
G016 16x16,0	40	16	25.5	415E



Attachements

Collets Type OZ / Type OZ25

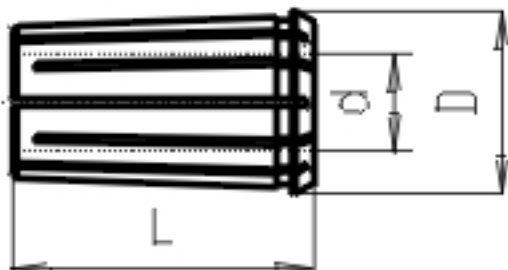


Verwendung

for clamping cylindrical shafts, for collet chucks system Ortlieb DIN 6388

Werkstoff

Alloyed case-hardened steel with a tensile strength of 800N/mm². Carbonized 44+4 HRC), Grinded. Double slotted



Article-Nr.	L	d.	D	Typ OZ
G016 25x 2,0	52	2	35.5	462E
G016 25x 2,5	52	2.5	35.5	462E
G016 25x 3,0	52	3	35.5	462E
G016 25x 3,5	52	3.5	35.5	462E
G016 25x 4,0	52	4	35.5	462E
G016 25x 4,5	52	4.5	35.5	462E
G016 25x 5,0	52	5	35.5	462E
G016 25x 5,5	52	5.5	35.5	462E
G016 25x 6,0	52	6	35.5	462E
G016 25x 6,5	52	6.5	35.5	462E
G016 25x 7,0	52	7	35.5	462E
G016 25x 7,5	52	7.5	35.5	462E
G016 25x 8,0	52	8	35.5	462E
G016 25x 8,5	52	8.5	35.5	462E
G016 25x 9,0	52	9	35.5	462E
G016 25x 9,5	52	9.5	35.5	462E
G016 25x10,0	52	10	35.5	462E
G016 25x10,5	52	10.5	35.5	462E
G016 25x11,0	52	11	35.5	462E
G016 25x11,5	52	11.5	35.5	462E
G016 25x12,0	52	12	35.5	462E

Article-Nr.	L	d.	D	Typ OZ
G016 25x12,5	52	12.5	35.5	462E
G016 25x13,0	52	13	35.5	462E
G016 25x13,5	52	13.5	35.5	462E
G016 25x14,0	52	14	35.5	462E
G016 25x14,5	52	14.5	35.5	462E
G016 25x15,0	52	15	35.5	462E
G016 25x15,5	52	15.5	35.5	462E
G016 25x16,0	52	16	35.5	462E
G016 25x16,5	52	16.5	35.5	462E
G016 25x17,0	52	17	35.5	462E
G016 25x17,5	52	17.5	35.5	462E
G016 25x18,0	52	18	35.5	462E
G016 25x18,5	52	18.5	35.5	462E
G016 25x19,0	52	19	35.5	462E
G016 25x19,5	52	19.5	35.5	462E
G016 25x20,0	52	20	35.5	462E
G016 25x20,5	52	20.5	35.5	462E
G016 25x21,0	52	21	35.5	462E
G016 25x21,5	52	21.5	35.5	462E
G016 25x22,0	52	22	35.5	462E
G016 25x22,5	52	22.5	35.5	462E
G016 25x23,0	52	23	35.5	462E
G016 25x23,5	52	23.5	35.5	462E
G016 25x24,0	52	24	35.5	462E
G016 25x24,5	52	24.5	35.5	462E
G016 25x25,0	52	25	35.5	462E
G016 25x25,5	52	25.5	35.5	462E



Attachements

Collets Type OZ / Type OZ32

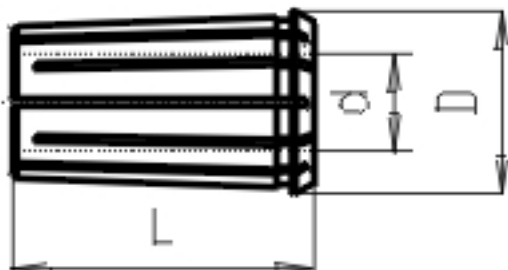


Verwendung

for clamping cylindrical shafts, for collet chucks system Ortlieb DIN 6388

Werkstoff

Alloyed case-hardened steel with a tensile strength of 800N/mm². Carbonized 44+4 HRC), Grinded. Double slotted



Article-Nr.	L	d.	D	Typ OZ
G016 32x 3,0	60	3	44	467E
G016 32x 3,5	60	3.5	44	467E
G016 32x 4,0	60	4	44	467E
G016 32x 4,5	60	4.5	44	467E
G016 32x 5,0	60	5	44	467E
G016 32x 5,5	60	5.5	44	467E
G016 32x 6,0	60	6	44	467E
G016 32x 6,5	60	6.5	44	467E
G016 32x 7,0	60	7	44	467E
G016 32x 7,5	60	7.5	44	467E
G016 32x 8,0	60	8	44	467E
G016 32x 8,5	60	8.5	44	467E
G016 32x 9,0	60	9	44	467E
G016 32x 9,5	60	9.5	44	467E
G016 32x10,0	60	10	44	467E
G016 32x10,5	60	10.5	44	467E
G016 32x11,0	60	11	44	467E
G016 32x11,5	60	11.5	44	467E
G016 32x12,0	60	12	44	467E
G016 32x12,5	60	12.5	44	467E
G016 32x13,0	60	13	44	467E

Article-Nr.	L	d.	D	Typ OZ
G016 32x13,5	60	13.5	44	467E
G016 32x14,0	60	14	44	467E
G016 32x14,5	60	14.5	44	467E
G016 32x15,0	60	15	44	467E
G016 32x15,5	60	15.5	44	467E
G016 32x16,0	60	16	44	467E
G016 32x16,5	60	16.5	44	467E
G016 32x17,0	60	17	44	467E
G016 32x17,5	60	17.5	44	467E
G016 32x18,0	60	18	44	467E
G016 32x18,5	60	18.5	44	467E
G016 32x19,0	60	19	44	467E
G016 32x19,5	60	19.5	44	467E
G016 32x20,0	60	20	44	467E
G016 32x20,5	60	20.5	44	467E
G016 32x21,0	60	21	44	467E
G016 32x21,5	60	21.5	44	467E
G016 32x22,0	60	22	44	467E
G016 32x22,5	60	22.5	44	467E
G016 32x23,0	60	23	44	467E
G016 32x23,5	60	23.5	44	467E
G016 32x24,0	60	24	44	467E
G016 32x24,5	60	24.5	44	467E
G016 32x25,0	60	25	44	467E
G016 32x25,5	60	25.5	44	467E
G016 32x26,0	60	26	44	467E
G016 32x26,5	60	26.5	44	467E
G016 32x27,0	60	27	44	467E
G016 32x27,5	60	27.5	44	467E
G016 32x28,0	60	28	44	467E
G016 32x28,5	60	28.5	44	467E
G016 32x29,0	60	29	44	467E
G016 32x29,5	60	29.5	44	467E
G016 32x30,0	60	30	44	467E
G016 32x30,5	60	30.5	44	467E
G016 32x31,0	60	31	44	467E
G016 32x31,5	60	31.5	44	467E
G016 32x32,0	60	32	44	467E



Attachements

Wrenches / Spanner Ortlieb OZ

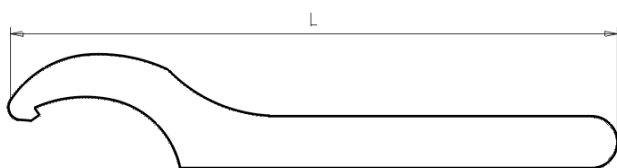


Verwendung

spanner for clamping nut system Ortlieb DIN 6388

Werkstoff

Quenched and tempered steel



Article-Nr.	L	Typ OZ
G017 16	170	415
G017 25	240	462
G017 32	240	467



Attachements

Wrenches / Spanner Regofix ER

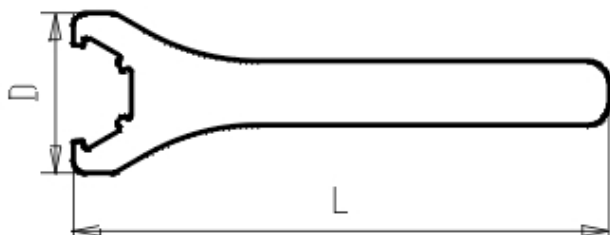


Werkstoff

Quenched and tempered steel

sonstige Bemerkungen

snaps on 4 points - no slide off possible



Article-Nr.	L	D	Typ ER
G023 8 Mini	70	12.4	8
G023 11 Mini	90	16.8	11
G023 16	16		
G023 16 Mini	110	22.5	16
G023 16y	16		
G023 25	203	70	25
G023 25 Mini	130	36	25
G023 32	253	80	32
G023 40	283	95	40
G023 50	303	100	50



Attachements

Wrenches / Spanner für Kombidorne

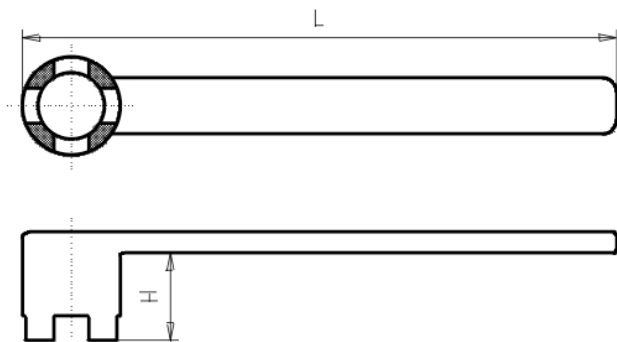


Verwendung

for screws according to DIN 6367

Werkstoff

Quenched and tempered steel, hardened and burnished



Article-Nr.	L	D	H
G042 13	160	13	16
G042 16	180	16	20
G042 22	200	22	25
G042 27	225	27	32
G042 32	250	32	36
G042 40	280	40	40
G042 50	315	50	45



Attachements

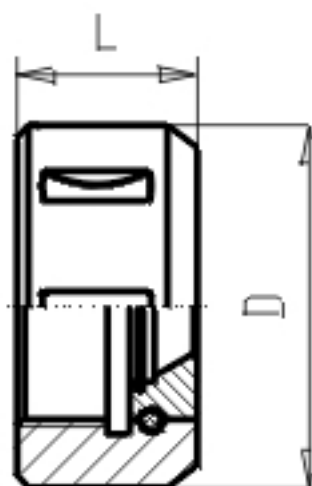
Nut Ortlieb OZ / Nut Ortlieb Standard

Verwendung

nut system Ortlieb DIN 6388 as a spare part

Lieferumfang

With ball bearing ring



Article-Nr.	L	D	Typ OZ
G018 16	24	43	415
G018 25	30	60	462
G018 32	34	72	467

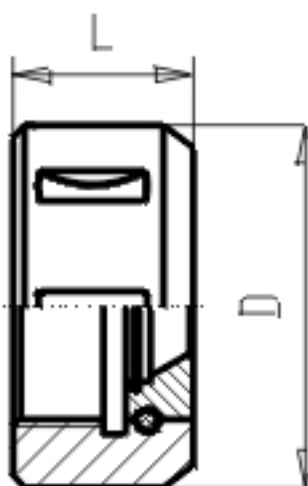


Attachements

Nut Ortlieb OZ / Nut Ortlieb sealed

Verwendung

nut system Ortlieb DIN 6388. Sealable for Collet chucks with internal coolant flow (either central or over collar). You need to insert sealing discs with the individual clamping-diameter.



Article-Nr.	L	D
G018IK 16	32	43
G018IK 25	38	60
G018IK 32	43	72

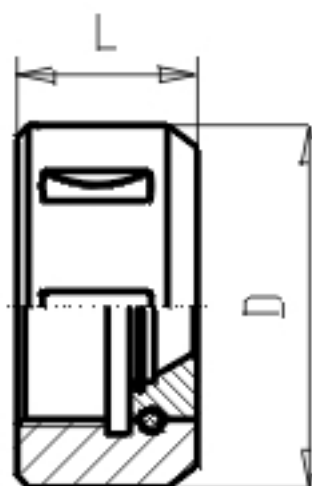


Attachements

Nut Ortlieb OZ / Nut Ortlieb balanced

Verwendung

nut system Ortlieb DIN 6388. Balanced for higher rotations.



Article-Nr.	L	D
G018gw 16	24	60
G018gw 25	30	72



Attachements

Collets Type ER / ESX / ER8



Verwendung

for clamping cylindrical shafts, for collet chucks system Regofix DIN 6499

Werkstoff

Alloyed case-hardened steel with a tensile strength of 800N/mm². Carbonized 44+4 HRC), Grinded

Handhabung

You have to insert the collet inclined into the nut until it snaps in the excenter ring. The nut with the inserted collet is then to be screwed upon the collet chuck. Unscrewing the nut, the collet releases by itself.

sonstige Bemerkungen

The clamping range of ER collets is 1 mm.

Article-Nr.	L	d.	D	Typ ER
G020 8x 1	13.5	1	8.5	8
G020 8x 1,5	13.5	1.5	8.5	8
G020 8x 2	13.5	2	8.5	8
G020 8x 2,5	13.5	2.5	8.5	8
G020 8x 3	13.5	3	8.5	8
G020 8x 3,5	13.5	3.5	8.5	8
G020 8x 4	13.5	4	8.5	8
G020 8x 4,5	13.5	4.5	8.5	8
G020 8x 5	13.5	5	8.5	8



Attachements

Collets Type ER / ESX / ER11



Verwendung

for clamping cylindrical shafts, for collet chucks system Regofix DIN 6499

Werkstoff

Alloyed case-hardened steel with a tensile strength of 800N/mm². Carbonized 44+4 HRC), Grinded

Handhabung

You have to insert the collet inclined into the nut until it snaps in the excenter ring. The nut with the inserted collet is then to be screwed upon the collet chuck. Unscrewing the nut, the collet releases by itself.

sonstige Bemerkungen

The clamping range of ER collets is 1 mm.

Article-Nr.	L	d.	D	Typ ER
G020 11x 1	18	1	11.5	11
G020 11x 1,5	18	1.5	11.5	11
G020 11x 2	18	2	11.5	11
G020 11x 2,5	18	2.5	11.5	11
G020 11x 3	18	3	11.5	11
G020 11x 3,5	18	3.5	11.5	11
G020 11x 4	18	4	11.5	11
G020 11x 4,5	18	4.5	11.5	11
G020 11x 5	18	5	11.5	11
G020 11x 5,5	18	5.5	11.5	11
G020 11x 6	18	6	11.5	11
G020 11x 6,5	18	6.5	11.5	11
G020 11x 7	18	7	11.5	11



Attachements

Collets Type ER / ESX / ER16



Verwendung

for clamping cylindrical shafts, for collet chucks system Regofix DIN 6499

Lieferumfang

1 Set of 10 pieces ER16 from dia 1 to 10mm

Werkstoff

Alloyed case-hardened steel with a tensile strength of 800N/mm². Carbonized 44+4 HRC), Grinded

Handhabung

You have to insert the collet inclined into the nut until it snaps in the excenter ring. The nut with the inserted collet is then to be screwed upon the collet chuck. Unscrewing the nut, the collet releases by itself.

sonstige Bemerkungen

The clamping range of ER collets is 1 mm.

Article-Nr.	L	d.	D	Typ ER
G020 16 SatZ	27	1-10	17	16
G020 16x 1	27	1	17	16
G020 16x 2	27	2	17	16
G020 16x 3	27	3	17	16
G020 16x 4	27	4	17	16
G020 16x 5	27	5	17	16
G020 16x 6	27	6	17	16
G020 16x 7	27	7	17	16
G020 16x 8	27	8	17	16
G020 16x 9	27	9	17	16
G020 16x10	27	10	17	16



Attachements

Collets Type ER / ESX / ER20



Verwendung

for clamping cylindrical shafts, for collet chucks system Regofix DIN 6499

Lieferumfang

1 Set of 12 pieces ER20 from dia 2 to 13mm

Werkstoff

Alloyed case-hardened steel with a tensile strength of 800N/mm². Carbonized 44+4 HRC), Grinded

Handhabung

You have to insert the collet inclined into the nut until it snaps in the excenter ring. The nut with the inserted collet is then to be screwed upon the collet chuck. Unscrewing the nut, the collet releases by itself.

sonstige Bemerkungen

The clamping range of ER collets is 1 mm.

Article-Nr.	L	d.	D	Typ ER
G020 20 SatZ	31	2-13	21	20
G020 20x 2	31	2	21	20
G020 20x 3	31	3	21	20
G020 20x 4	31	4	21	20
G020 20x 5	31	5	21	20
G020 20x 6	31	6	21	20
G020 20x 7	31	7	21	20
G020 20x 8	31	8	21	20
G020 20x 9	31	9	21	20
G020 20x10	31	10	21	20
G020 20x11	31	11	21	20
G020 20x12	31	12	21	20
G020 20x13	31	13	21	20



Attachements

Collets Type ER / ESX / ER25



Verwendung

for clamping cylindrical shafts, for collet chucks system Regofix DIN 6499

Lieferumfang

1 Set of 15 pieces ER25 from dia 2 to 16mm

Werkstoff

Alloyed case-hardened steel with a tensile strength of 800N/mm². Carbonized 44+4 HRC), Grinded

Handhabung

You have to insert the collet inclined into the nut until it snaps in the excenter ring. The nut with the inserted collet is then to be screwed upon the collet chuck. Unscrewing the nut, the collet releases by itself.

sonstige Bemerkungen

The clamping range of ER collets is 1 mm.

Article-Nr.	L	d.	D	Typ ER
G020 25 SatZ	35	2.16	26	25
G020 25x 2	35	2	26	25
G020 25x 3	35	3	26	25
G020 25x 4	35	4	26	25
G020 25x 5	35	5	26	25
G020 25x 6	35	6	26	25
G020 25x 7	35	7	26	25
G020 25x 8	35	8	26	25
G020 25x 9	35	9	26	25
G020 25x10	35	10	26	25
G020 25x11	35	11	26	25
G020 25x12	35	12	26	25
G020 25x13	35	13	26	25
G020 25x14	35	14	26	25
G020 25x15	35	15	26	25
G020 25x16	35	16	26	25



Attachements

Collets Type ER / ESX / ER32



Verwendung

for clamping cylindrical shafts, for collet chucks system Regofix DIN 6499

Lieferumfang

1 Set of 18 pieces ER32 from dia 3 to 20mm

Werkstoff

Alloyed case-hardened steel with a tensile strength of 800N/mm². Carbonized 44+4 HRC), Grinded

Handhabung

You have to insert the collet inclined into the nut until it snaps in the excenter ring. The nut with the inserted collet is then to be screwed upon the collet chuck. Unscrewing the nut, the collet releases by itself.

sonstige Bemerkungen

The clamping range of ER collets is 1 mm.

Article-Nr.	L	d.	D	Typ ER
G020 32 SatZ	40	2-20	33	32
G020 32x 2y	40	2	33	32
G020 32x 3	40	3	33	32
G020 32x 4	40	4	33	32
G020 32x 5	40	5	33	32
G020 32x 6	40	6	33	32
G020 32x 7	40	7	33	32
G020 32x 8	40	8	33	32
G020 32x 9	40	9	33	32
G020 32x10	40	10	33	32
G020 32x11	40	11	33	32
G020 32x12	40	12	33	32
G020 32x13	40	13	33	32
G020 32x14	40	14	33	32
G020 32x15	40	15	33	32
G020 32x16	40	16	33	32
G020 32x17	40	17	33	32
G020 32x18	40	18	33	32
G020 32x19	40	19	33	32
G020 32x20	40	20	33	32



Attachements

Collets Type ER / ESX / ER40



Verwendung

for clamping cylindrical shafts, for collet chucks system Regofix DIN 6499

Lieferumfang

1 Set of 23 pieces ER40 from dia 4 to 26mm

Werkstoff

Alloyed case-hardened steel with a tensile strength of 800N/mm². Carbonized 44+4 HRC), Grinded

Handhabung

You have to insert the collet inclined into the nut until it snaps in the excenter ring. The nut with the inserted collet is then to be screwed upon the collet chuck. Unscrewing the nut, the collet releases by itself.

sonstige Bemerkungen

The clamping range of ER collets is 1 mm.

Article-Nr.	L	d.	D	Typ ER
G020 40 SatZ	46	2-30	41	40
G020 40x 3	46	3	41	40
G020 40x 4	46	4	41	40
G020 40x 5	46	5	41	40
G020 40x 6	46	6	41	40
G020 40x 7	46	7	41	40
G020 40x 8	46	8	41	40
G020 40x 9	46	9	41	40
G020 40x10	46	10	41	40
G020 40x11	46	11	41	40
G020 40x12	46	12	41	40
G020 40x13	46	13	41	40
G020 40x14	46	14	41	40
G020 40x15	46	15	41	40
G020 40x16	46	16	41	40
G020 40x17	46	17	41	40
G020 40x18	46	18	41	40
G020 40x19	46	19	41	40
G020 40x20	46	20	41	40
G020 40x21	46	21	41	40
G020 40x22	46	22	41	40
G020 40x23	46	23	41	40
G020 40x24	46	24	41	40

Article-Nr.	L	d.	D	Typ ER
G020 40x25	46	25	41	40
G020 40x26	46	26	41	40
G020 40x27	46	27	41	40
G020 40x28	46	28	41	40
G020 40x29	46	29	41	40
G020 40x30	46	30	41	40



Attachements

Collets Type ER / ESX / ER50



Verwendung

for clamping cylindrical shafts, for collet chucks system Regofix DIN 6499

Werkstoff

Alloyed case-hardened steel with a tensile strength of 800N/mm². Carbonized 44+4 HRC), Grinded

Handhabung

You have to insert the collet inclined into the nut until it snaps in the excenter ring. The nut with the inserted collet is then to be screwed upon the collet chuck. Unscrewing the nut, the collet releases by itself.

sonstige Bemerkungen

The clamping range of ER collets is 1 mm.

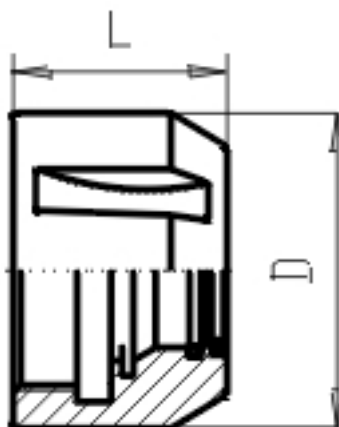
Article-Nr.	L	d.	D	Typ ER
G020 50x 6	60	6	52	50
G020 50x 8	60	8	52	50
G020 50x10	60	10	52	50
G020 50x12	60	12	52	50
G020 50x14	60	14	52	50
G020 50x16	60	16	52	50
G020 50x18	60	18	52	50
G020 50x20	60	20	52	50
G020 50x22	60	22	52	50
G020 50x24	60	24	52	50
G020 50x26	60	26	52	50
G020 50x28	60	28	52	50
G020 50x30	60	30	52	50
G020 50x32	60	32	52	50
G020 50x34	60	34	52	50



Attachements

Nut ER / ESX / Nut ER Standard

Verwendung
as spare part



Article-Nr.	L	D	Gewinde	Typ ER
G024 16	17	32	M22x1,5	16
G024 16 Sich	17	32	M22x1,5	16
G024 20	19	35	M25x1,5	20
G024 25	20	42	M32x1,5	25
G024 32	22	50	M40x1,5	32
G024 40	25	63	M50x1,5	40
G024 50	35	78	M64x2	50

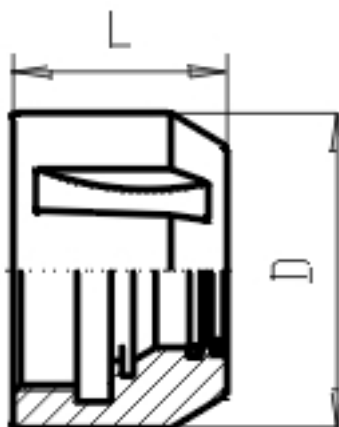


Attachements

Nut ER / ESX / Nut ER sealed

Verwendung

Can be sealed for toolings with internal coolant. Suitable for high pressure. Can replace the standart-nut. A sealing disc with the needed clamping diameter is necessary for use.



Article-Nr.	L	D	Gewinde	Typ ER
G024IK 16	25	32	M22x1,5	16
G024IK 20	25	35	M25x1,5	20
G024IK 25	26	42	M32x1,5	25
G024IK 32	29	50	M40x1,5	32
G024IK 40	31	63	M50x1,5	40

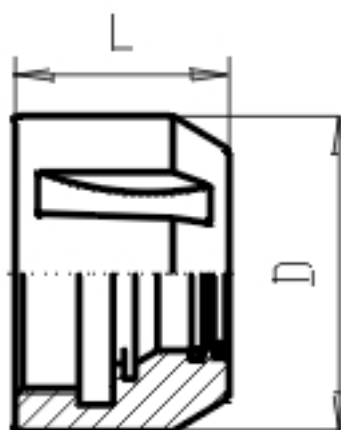


Attachements

Nut ER / ESX / Nut ER high clamp

Verwendung

as spare part. Specially coated - for higher clamping power



Article-Nr.	L	D	Gewinde	Typ ER
G024G 16	17	32	M22x1,5	16
G024G 20	19	35	M25x1,5	20
G024G 25	20	42	M32x1,5	25
G024G 32	22	50	M40x1,5	32
G024G 40	25	63	M50x1,5	40
G024G 50	35	78	M64x2	50

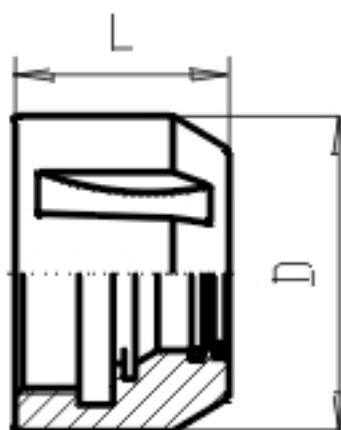


Attachements

Nut ER / ESX / Nut ER High speed

Verwendung

as spare part. Balanced - for higher rpm



Article-Nr.	L	D	Gewinde	Typ ER
G024HU 16	18	32	M22x1,5	16
G024HU 20	19	35	M25x1,5	20
G024HU 25	20	42	M32x1,5	25
G024HU 32	23	50	M40x1,5	32
G024HU 40	26	63	M50x1,5	40



Attachements

Nut ER / ESX / Nut ER Mini

Verwendung
as spare part

Article-Nr.	L	D	Gewinde	Typ ER
G024 08 Mini	11	12	M10x0,75	8
G024 11 Mini	12	16	M13x0,75	11
G024 16 Mini	18	22	M19x1	16
G024 25 Mini	20	35	M30x1	25



Attachements

Plastic Suitcase / Suit-Case SK40

**Verwendung**

For storage of collet chuck, spanner and max. 24 collets

Lieferumfang

Without content

Werkstoff

Solid plastic 400 x 250 x 120 mm

Article-Nr.	SK
G026 SK 40	Für SK 40



Attachements

Plastic Suitcase / Suit-Case SK50

**Verwendung**

For storage of collet chuck, spanner and max. 24 collets

Lieferumfang

Without content

Werkstoff

Solid plastic 400 x 250 x 120 mm

Article-Nr.	SK
G026 SK 50	Für SK 50



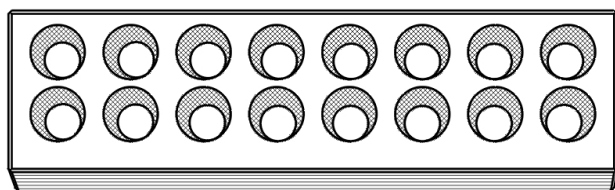
Attachements

Wooden Tray / for collets



Verwendung

For storage of collets, either type ER Regofix or Oz Ortlieb



Article-Nr.	Typ ER
G027 16	ER16
G027 20	ER20
G027 25	ER25
G027 32	ER32
G027 40	ER40



Attachements

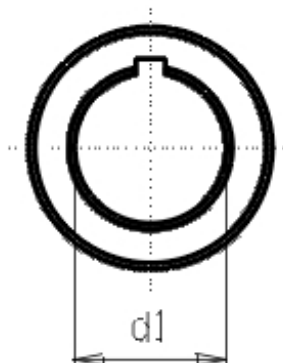
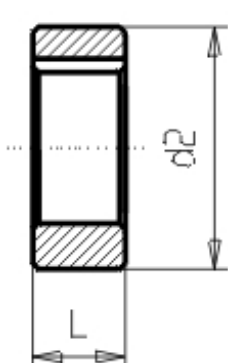
Spacing Collars / Form A stamped

Verwendung

for long milling arbors, combi shell mill holders etc.

Werkstoff

steel strip - case-hardened . Carbonized according to Vickers min. 550 HV (min. 52 HRC)



Article-Nr.	d1	Form	d2	L
G030 13x0,03	13	A	21	0.03
G030 13x0,05	13	A	21	0.05
G030 13x0,10	13	A	21	0.1
G030 13x0,20	13	A	21	0.2
G030 13x0,30	13	A	21	0.3
G030 13x0,50	13	A	21	0.5
G030 13x0,60	13	A	21	0.6
G030 13x1,0	13	A	21	1
G030 16x0,03	16	A	25	0.03
G030 16x0,05	16	A	25	0.05
G030 16x0,10	16	A	25	0.1
G030 16x0,20	16	A	25	0.2
G030 16x0,30	16	A	25	0.3
G030 16x0,50	16	A	25	0.5
G030 16x0,60	16	A	25	0.6
G030 16x1,0	16	A	25	1
G030 22x0,03	22	A	33	0.03
G030 22x0,05	22	A	33	0.05

Article-Nr.	d1	Form	d2	L
G030 22x0,10	22	A	33	0.1
G030 22x0,20	22	A	33	0.2
G030 22x0,30	22	A	33	0.3
G030 22x0,50	22	A	33	0.5
G030 22x0,60	22	A	33	0.6
G030 22x1,0	22	A	33	1
G030 27x0,03	27	A	39	0.03
G030 27x0,05	27	A	39	0.05
G030 27x0,10	27	A	39	0.1
G030 27x0,20	27	A	39	0.2
G030 27x0,30	27	A	39	0.3
G030 27x0,50	27	A	39	0.5
G030 27x0,60	27	A	39	0.6
G030 27x1,0	27	A	39	1
G030 32x0,03	32	A	45	0.03
G030 32x0,05	32	A	45	0.05
G030 32x0,10	32	A	45	0.1
G030 32x0,20	32	A	45	0.2
G030 32x0,30	32	A	45	0.3
G030 32x0,50	32	A	45	0.5
G030 32x0,60	32	A	45	0.6
G030 32x1,0	32	A	45	1
G030 40x0,03	40	A	54	0.03
G030 40x0,05	40	A	54	0.05
G030 40x0,10	40	A	54	0.1
G030 40x0,20	40	A	54	0.2
G030 40x0,30	40	A	54	0.3
G030 40x0,50	40	A	54	0.5
G030 40x0,60	40	A	54	0.6
G030 40x1,0	40	A	54	1
G030 50x0,05	50	A	67	0.05
G030 50x0,10	50	A	67	0.1
G030 50x0,20	50	A	67	0.2
G030 50x0,30	50	A	67	0.3
G030 50x0,50	50	A	67	0.5
G030 50x0,60	50	A	67	0.6
G030 50x1,0	50	A	67	1
G030 60x0,10	60	A	83	0.1
G030 60x0,20	60	A	83	0.2
G030 60x0,30	60	A	83	0.3
G030 60x0,50	60	A	83	0.5
G030 60x0,60	60	A	83	0.6
G030 60x1,0	60	A	83	1



Attachements

Spacing Collars / Form B turned + grinded

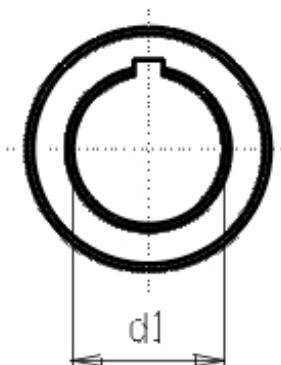
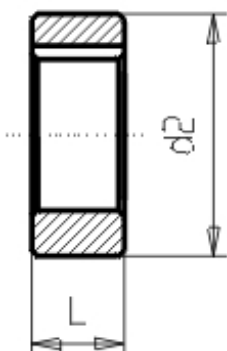


Verwendung

for long milling arbors, combi shell mill holders etc.

Werkstoff

alloyed case-hardened steel. Carbonized according to Vickers min. 550 HV (min. 52 HRC)



Article-Nr.	d1	Form	d2	L
G030B 13x 2	13	B	22	2
G030B 13x 3	13	B	22	3
G030B 13x 4	13	B	22	4
G030B 13x 5	13	B	22	5
G030B 13x 6	13	B	22	6
G030B 13x 8	13	B	22	8
G030B 13x 10	13	B	22	10
G030B 13x 20	13	B	22	20
G030B 13x 30	13	B	22	30
G030B 16x 2	16	B	27	2
G030B 16x 3	16	B	27	3
G030B 16x 4	16	B	27	4
G030B 16x 5	16	B	27	5
G030B 16x 6	16	B	27	6
G030B 16x 8	16	B	27	8

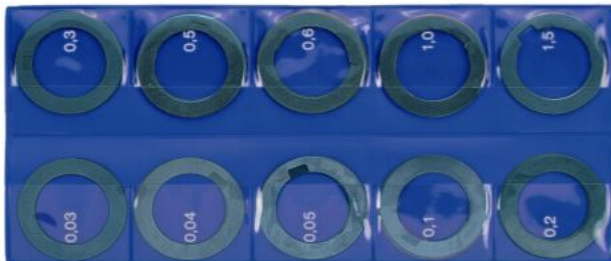
Article-Nr.	d1	Form	d2	L
G030B 16x 10	16	B	27	10
G030B 16x 20	16	B	27	20
G030B 16x 30	16	B	27	30
G030B 16x 50	16	B	27	50
G030B 16x 60	16	B	27	60
G030B 22x 2	22	B	34	2
G030B 22x 3	22	B	34	3
G030B 22x 4	22	B	34	4
G030B 22x 5	22	B	34	5
G030B 22x 6	22	B	34	6
G030B 22x 8	22	B	34	8
G030B 22x 10	22	B	34	10
G030B 22x 20	22	B	34	20
G030B 22x 30	22	B	34	30
G030B 22x 50	22	B	34	50
G030B 22x 60	22	B	34	60
G030B 22x100	22	B	34	100
G030B 27x 2	27	B	41	2
G030B 27x 3	27	B	41	3
G030B 27x 4	27	B	41	4
G030B 27x 5	27	B	41	5
G030B 27x 6	27	B	41	6
G030B 27x 8	27	B	41	8
G030B 27x 10	27	B	41	10
G030B 27x 20	27	B	41	20
G030B 27x 30	27	B	41	30
G030B 27x 50	27	B	41	50
G030B 27x 60	27	B	41	60
G030B 27x100	27	B	41	100
G030B 32x 2	32	B	47	2
G030B 32x 3	32	B	47	3
G030B 32x 4	32	B	47	4
G030B 32x 5	32	B	47	5
G030B 32x 6	32	B	47	6
G030B 32x 8	32	B	47	8
G030B 32x 10	32	B	47	10
G030B 32x 20	32	B	47	20
G030B 32x 30	32	B	47	30
G030B 32x 50	32	B	47	50
G030B 32x 60	32	B	47	60
G030B 32x100	32	B	47	100
G030B 40x 2	40	B	55	2
G030B 40x 3	40	B	55	3
G030B 40x 4	40	B	55	4

Article-Nr.	d1	Form	d2	L
G030B 40x 5	40	B	55	5
G030B 40x 6	40	B	55	6
G030B 40x 8	40	B	55	8
G030B 40x 10	40	B	55	10
G030B 40x 20	40	B	55	20
G030B 40x 30	40	B	55	30
G030B 40x 50	40	B	55	50
G030B 40x 60	40	B	55	60
G030B 40x100	40	B	55	100
G030B 50x 2	50	B	69	2
G030B 50x 3	50	B	69	3
G030B 50x 4	50	B	69	4
G030B 50x 5	50	B	69	5
G030B 50x 6	50	B	69	6
G030B 50x 10	50	B	69	10
G030B 50x 20	50	B	69	20
G030B 50x 30	50	B	69	30
G030B 50x 50	50	B	69	50
G030B 50x 60	50	B	69	60
G030B 50x100	50	B	69	100
G030B 60x 3	60	B	84	3
G030B 60x 4	60	B	84	4
G030B 60x 5	60	B	84	5
G030B 60x 6	60	B	84	6
G030B 60x 10	60	B	84	10
G030B 60x 20	60	B	84	20
G030B 60x 30	60	B	84	30
G030B 60x 50	60	B	84	50
G030B 60x 60	60	B	84	60
G030B 60x100	60	B	84	100



Attachements

Spacing Collars / Set Form A



Verwendung

for long milling arbors, combi shell mill holders etc.

Werkstoff

steel strip - case-hardened . Carbonized according to Vickers min. 550 HV (min. 52 HRC)

Article-Nr.	d1	Form
G030I 16	16	A
G030I 22	22	A
G030I 27	27	A
G030I 32	32	A
G030I 40	40	A
G030II 16	16	A
G030II 22	22	A
G030II 27	27	A
G030II 32	32	A
G030II 40	40	A



Attachements

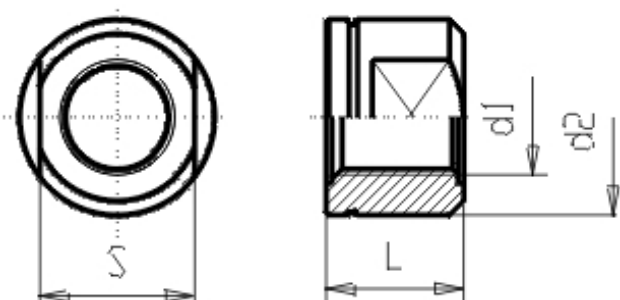
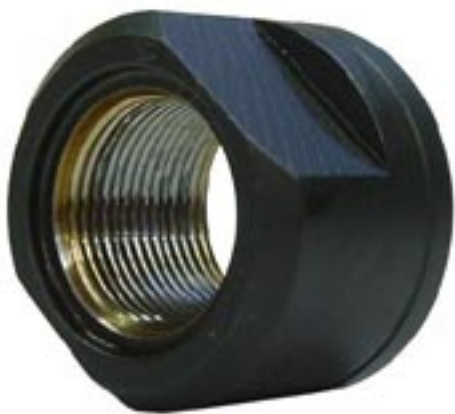
Nuts DIN 2082 / for long milling arbors

Verwendung

for long milling arbors

Werkstoff

case-hardened. Carbonized according to Vickers min. 630 HV (min. 56 HRC), The thread is unhardened, the clamping surface is grinded.

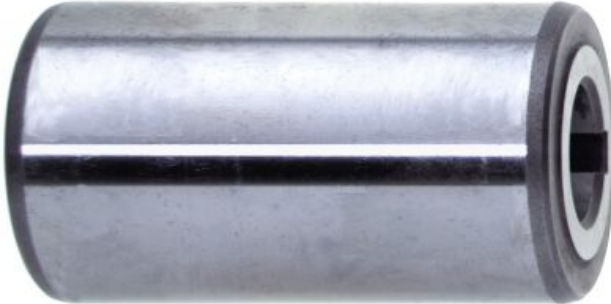


Article-Nr.	d1	d2	L	Gewinde	S
G034 13	13	22	14	M 12x1,5	19
G034 16	16	26	16	M 16x1,5	22
G034 22	22	34	22	M 20x1,5	27
G034 27	27	40	28	M 24x1,5	32
G034 32	32	47	32	M 30x1,5	41
G034 40	40	55	40	M 36x2,0	46
G034 50	50	68	46	M 42x2,0	55
G034 60	60	80	56	M 52x2,0	65



Attachements

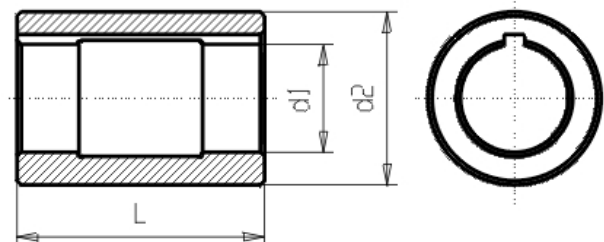
Bearing Collars DIN 2083 / for Dia 13

**Verwendung**

for long milling arbors

Werkstoff

case-hardened. Carbonized according to Vickers min. 680 HV (min. 59 HRC), bore, outer diameter and contact surface are grinded

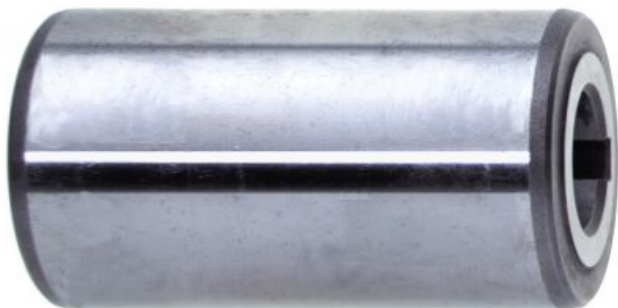


Article-Nr.	d1	d2	L
G035 13x28x 40	13	28	40



Attachements

Bearing Collars DIN 2083 / for Dia 16

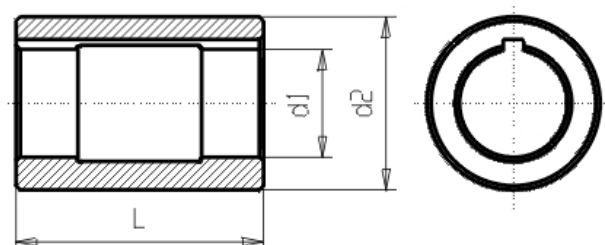


Verwendung

for long milling arbors

Werkstoff

case-hardened. Carbonized according to Vickers min. 680 HV (min. 59 HRC), bore, outer diameter and contact surface are grinded

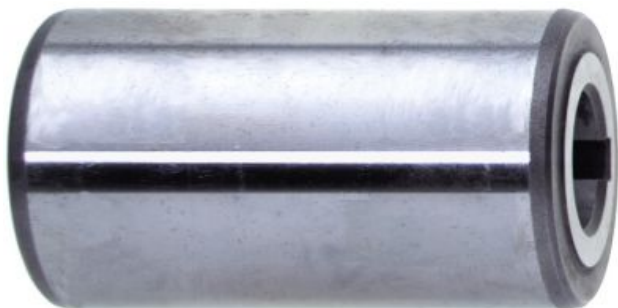


Article-Nr.	d1	d2	L
G035 16x28x 40	16	28	40
G035 16x42x 60	16	42	60
G035 16x48x 70	16	48	70
G035 16x56x 80	16	56	80



Attachements

Bearing Collars DIN 2083 / for Dia 22

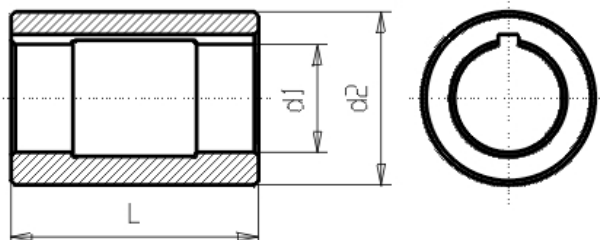


Verwendung

for long milling arbors

Werkstoff

case-hardened. Carbonized according to Vickers min. 680 HV (min. 59 HRC), bore, outer diameter and contact surface are grinded

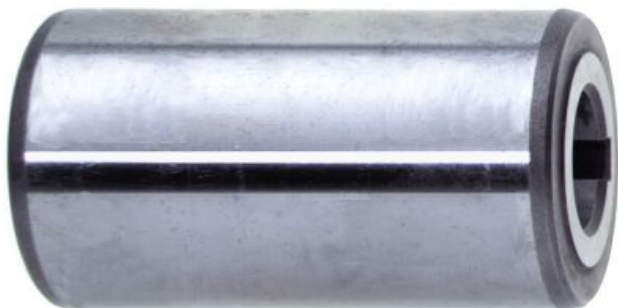


Article-Nr.	d1	d2	L
G035 22x42x 60	22	42	60
G035 22x48x 70	22	48	70
G035 22x56x 80	22	56	80
G035 22x70x100y	22	70	100



Attachements

Bearing Collars DIN 2083 / for Dia 27

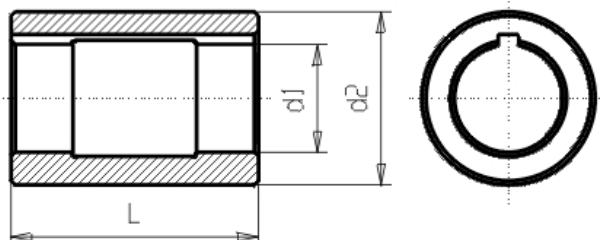


Verwendung

for long milling arbors

Werkstoff

case-hardened. Carbonized according to Vickers min. 680 HV (min. 59 HRC), bore, outer diameter and contact surface are grinded



Article-Nr.	d1	d2	L
G035 27x42x 60	27	42	60
G035 27x48x 70	27	48	70
G035 27x56x 80	27	56	80
G035 27x70x100y	27	70	100
G035 27x85x120y	27	85	120



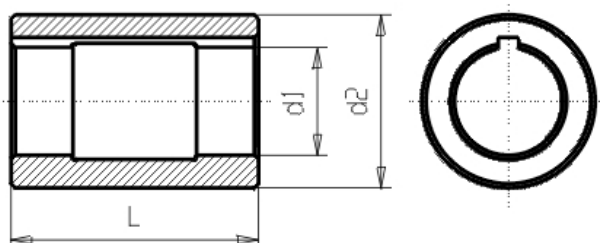
Attachements

Bearing Collars DIN 2083 / for Dia 32



Verwendung
for long milling arbors

Werkstoff
case-hardened. Carbonized according to Vickers min. 680 HV (min. 59 HRC), bore, outer diameter and contact surface are grinded

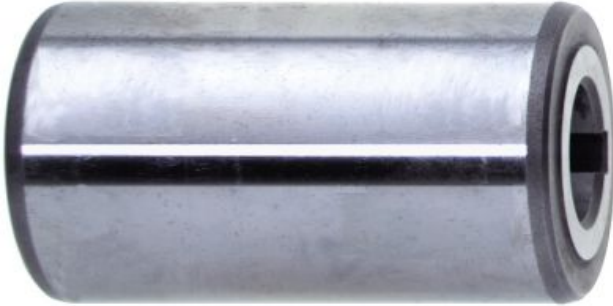


Article-Nr.	d1	d2	L
G035 32x48x 70	32	48	70
G035 32x56x 80	32	56	80
G035 32x70x100y	32	70	100
G035 32x85x120y	32	85	120



Attachements

Bearing Collars DIN 2083 / for Dia 40

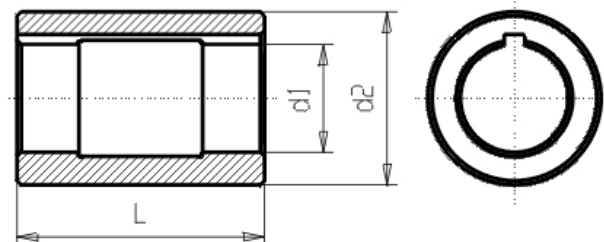


Verwendung

for long milling arbors

Werkstoff

case-hardened. Carbonized according to Vickers min. 680 HV (min. 59 HRC), bore, outer diameter and contact surface are grinded



Article-Nr.	d1	d2	L
G035 40x 56x 80	40	56	80
G035 40x 70x10y	40	70	100
G035 40x 85x12y	40	85	120
G035 40x110x14y	40	110	140



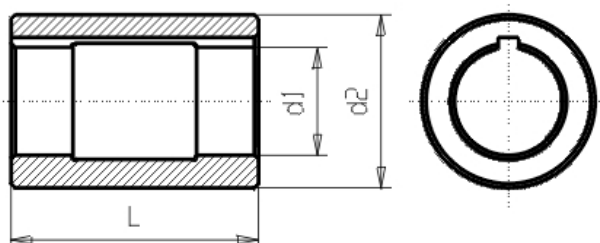
Attachements

Bearing Collars DIN 2083 / for Dia 50



Verwendung
for long milling arbors

Werkstoff
case-hardened. Carbonized according to Vickers min. 680 HV (min. 59 HRC), bore, outer diameter and contact surface are grinded



Article-Nr.	d1	d2	L
G035 50x 70x10y	50	70	100
G035 50x 85x12y	50	85	120
G035 50x110x14y	50	110	140



Attachements

Bearing Collars DIN 2083 / for Dia 60

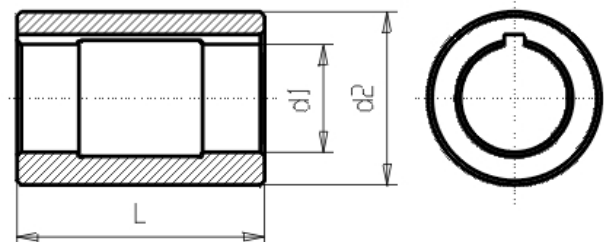


Verwendung

for long milling arbors

Werkstoff

case-hardened. Carbonized according to Vickers min. 680 HV (min. 59 HRC), bore, outer diameter and contact surface are grinded



Article-Nr.	d1	d2	L
G035 60x 85x12y	60	85	120
G035 60x110x14y	60	110	140



Attachements

Drive Rings DIN 6366 / for combi shell mill holders

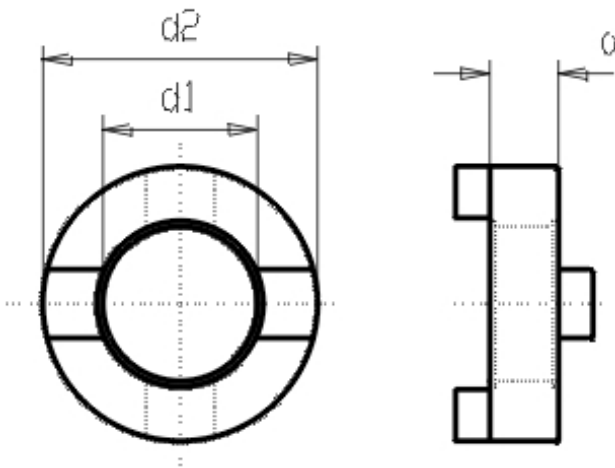


Verwendung

for combi shell mill holders

Werkstoff

case-hardened. Carbonized according to Vickers min. 550 HV (min. 52 HRC), contact surfaces are grinded



Article-Nr.	d1	d2	klein a
G040 13	13	28	10
G040 16	16	32	10
G040 22	22	40	12
G040 27	27	48	12
G040 32	32	58	14
G040 40	40	70	14
G040 50	50	90	16
G040 60	60	110	16



Attachements

Clamping Screw DIN 6367 / for combi shell mill + face mill holders

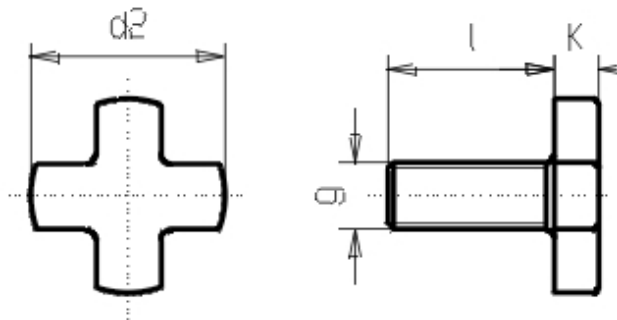


Verwendung

for combi shell mill holders and face mill holders

Werkstoff

Quenched and tempered steel

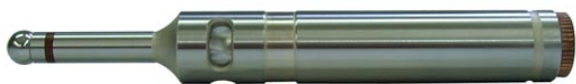


Article-Nr.	l1	d2	g	k	Schaft Durchm. d1
G041 10 M5	10	14	M 5	4	10
G041 13 M6	12	17	M 6	5	13
G041 16 M8	16	20	M 8	6	16
G041 22 M10	18	28	M 10	7	22
G041 27 M12	22	35	M 12	8	27
G041 32 M16	26	42	M 16	9	32
G041 40 M20	30	52	M 20	10	40
G041 50 M24	36	63	M 24	12	50



Attachements

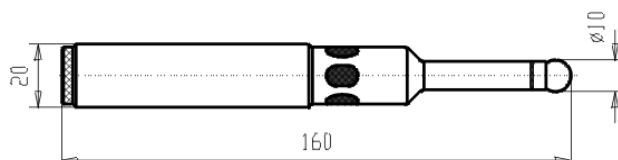
Edge Finder / 2D Edge Finder

**Verwendung**

for check zero of workpiece

Werkstoff

case-hardened steel (min. 52 HRC)



Article-Nr.	d1	L	D
G047 2	10	160	20



Attachements

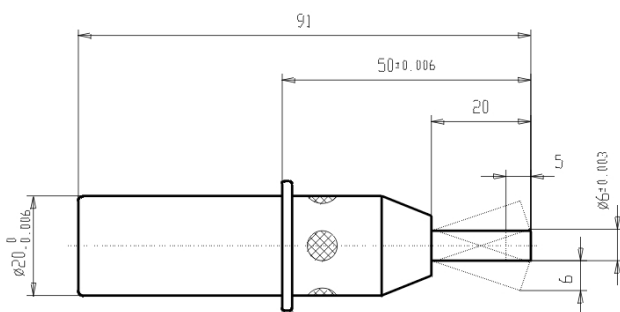
Edge Finder / 3D Edge Finder

Verwendung

for check zero of workpiece

Werkstoff

case-hardened steel (min. 52 HRC)



Article-Nr.	d1	L	D
G047 3	6	91	20



Attachements

Spindle Wiper / for SK

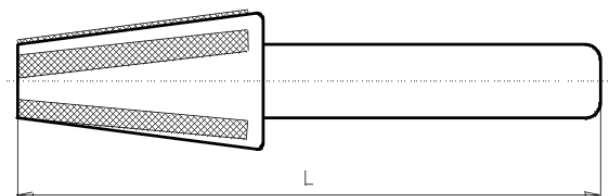


Verwendung

for cleaning and maintenance of machine spindle

Werkstoff

sturdy plastic with inserted artificial leather



Article-Nr.	SK	L
G048 30	30	150
G048 40	40	180
G048 50	50	220



Attachements

Spindle Wiper / for MT

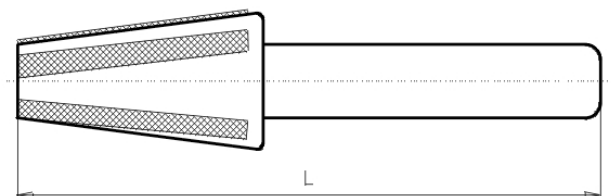


Verwendung

for cleaning and maintenance of inner morse cone

Werkstoff

sturdy plastic with inserted artificial leather



Article-Nr.	MK	L
G048 1	1	160
G048 2	2	175
G048 3	3	185
G048 4	4	220
G048 5	5	250



Attachements

Spindle Wiper / for HSK

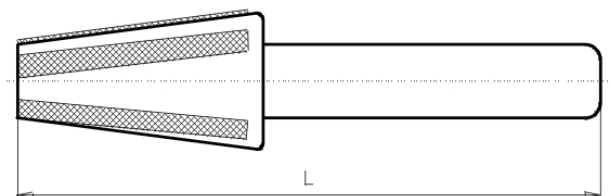


Verwendung

for cleaning and maintenance of machine spindle

Werkstoff

sturdy plastic with inserted artificial leather



Article-Nr.	HSK	L
G048 HSK100	100	199
G048 HSK32	32	142
G048 HSK40	40	142
G048 HSK50	50	152
G048 HSK63	63	168
G048 HSK80	80	178



Attachements

Assembly Device / for inserting toolings

**Verwendung**

for clamping and un-clamping of toolings or pull-studs. It can be used either vertical or horizontal

Werkstoff

hardened steel, can be fixed variabel

Article-Nr.	für Kegel
G049 30	SK 30
G049 30 K	SK 30
G049 40	SK 40
G049 45	SK 45
G049 50	SK 50



Attachements

Coolant Tube HSK / Coolant Tube HSK



Verwendung

to be screwed in a toolholder HSK to enable central coolant flow.

Werkstoff

Alloyed case-hardened steel with a tensile strength of 800N/mm². Carbonized according to Vickers min. 630 HV (min. 56 HRC), Thread unhardened. All relevant surfaces are grinded.

Article-Nr.	HSK	Gewinde
G065 A 63-2	A 63	M18x1
G065 A100	A 100	M24x1,5
G065 s 63	A 63	
G065 s100	A 100	

